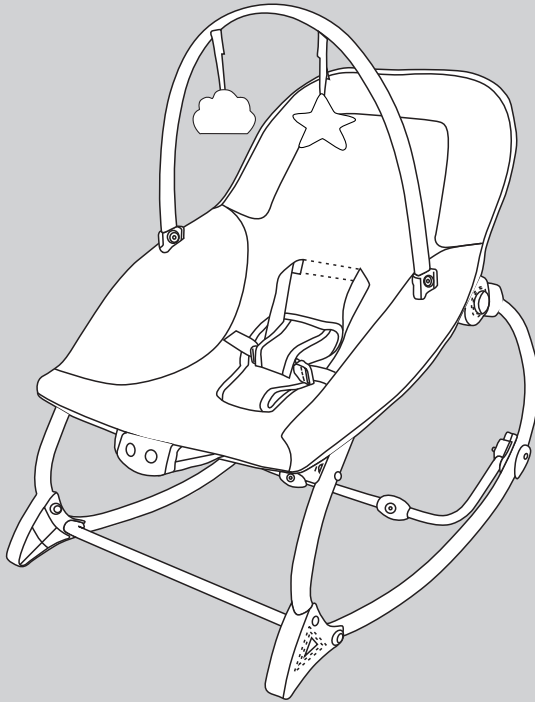


# 3 in 1 Infant Toddler Music and Vibration Rocker

Instruction manual



**IMPORTANT - RETAIN FOR FUTURE  
REFERENCE. READ CAREFULLY.**

**Warning:** A child's safety is your responsibility.

This product is tested to EN 12790-1:2023

# 1. Contents

1. Contents .....	01
2. Welcome .....	01
3. Safety instructions.....	02-03
4. Battery safety instructions .....	03
5. Parts list .....	04
6. Assembly .....	05-09
7. Adjusting .....	10
8. Safety harness .....	11
9. Vibrations/Music box.....	11
10. Care and maintenance .....	12
10.1. Cleaning .....	12
10.2. Maintenance .....	12

# 2 .Welcome

Thank you for purchasing the Puggle 3 in 1 Infant Toddler Music and Vibration Rocker.

Please read the instructions and warnings carefully before use to ensure safe and satisfactory operation of your Puggle 3 in 1 Infant Toddler Music and Vibration Rocker.

If you have a query with this product or require replacement parts, please contact Online4baby online at [online4baby.com/contact-us](http://online4baby.com/contact-us).

### 3. Safety Instructions

**IMPORTANT! PLEASE READ THE FOLLOWING INSTRUCTIONS CAREFULLY BEFORE USING THE PRODUCT.**

- **WARNING!** Read these instructions carefully before assembly and use and keep for future reference. The child may be hurt if you do not follow these instructions.
- **WARNING!** This product is suitable in rocker mode for one child from birth (up to max. weight 9kg).
- **WARNING!** This product is suitable in toddler mode for one child from when they are able to sit up unaided. When used in the recline position (reclined cradle mode): Use until child weighs 9 kg or is able to sit up unaided. Do not use the reclined cradle once your child can sit unaided. When used in the upright position (toddler mode): Use only with a child who is able to sit up unaided and weighs more than 9 kg (up to max. weight 15kg).
- **WARNING! Never leave the child unattended.**
- **WARNING! ALWAYS use the restraint system ensuring it is correctly adjusted at all times.**
- **WARNING! This reclined cradle is not intended for prolonged periods of sleeping.**
- **WARNING! NEVER use the reclined cradle for a child that is able to sit up unassisted. Stop using when the child starts trying to sit up.**
- **WARNING!** Do not attempt to move or lift the product when a child is in it.
- **WARNING! FALL HAZARD:** Child's activity may move the product. Use only on the floor. Never use on an elevated surface.
- **WARNING! SUFFOCATION HAZARD:** Never use on a soft surface (bed, sofa, cushion), as seat may tip over and cause suffocation.
- **WARNING!** The toy bar is not a handle. **Never use the toy bar to lift or carry the product.**
- Never leave baby in the bouncer without supervision.
- Do not use in the reclined cradle mode once the child can sit up unaided.
- Baby's movements could make the product tip over.
- Do not use the product if any part is broken or missing.
- Before using, check that all parts are properly locked into position and adjusted correctly.
- Check the suspension system of the bouncer regularly.
- Do not use the product without its seat pad.
- **Do not use this product on an elevated surface i.e. a table. Place on stable, dry, level floor only.**
- This reclined cradle does not replace a cot or cot bed. Should your child need to sleep, then it should be placed in a suitable cot or cot bed.
- The rocker is not a carrycot, nor a car seat. Always use the straps and adjust them properly, even if baby will only be in the bouncer for a short time.
- Never adjust the recline position when the baby is in the product.
- Do not use near an open fire or any other kind of heater.
- Keep the plastic bags of the packaging out of reach of babies and young children to avoid any risk of suffocation.
- Never add any pillow, blanket or padding to the reclined cradle.
- Do not put objects with strings around the neck of your baby, do not hang strings from the bouncer and do not attach strings to toys. This could lead to strangling.
- Do not put the bouncer close to a window where the strings of a blind or curtains could lead to strangling.
- Do not attach other toys than those supplied.

### 3. Safety Instructions

- Insert the music box into the footrest frame at the end, make sure the music box has fixed into the clip.
- Only use authorised additional replacement parts. Do not use accessories or replacement parts other than those approved by the manufacturer.
- Keep children away from the product during assembly and when not in use.
- Do not let other children play unattended near the product.
- Adult assembly required.
- Never let the child sit in or climb out unaided by an adult.
- This reclined cradle conforms to EN 12790-1:2023

### 4. Battery Safety Instructions

Use a small cross head screwdriver to open the battery compartment door on the vibration/music box (J). Insert the battery as indicated inside the battery door and replace the screw. The vibration/music box requires two 1.5V "AA" Alkaline batteries.

**ATTENTION! BATTERY SAFETY: KEEP FOR FUTURE REFERENCE.**

**WARNING! Dispose of used batteries immediately. Keep new and used batteries away from children. If you think batteries might have been swallowed or placed inside any part of the body, seek immediate medical attention.**

**CAUTION:** To prevent possible battery leakage, be sure to follow the guidelines outlined below:

- Insert batteries in the correct polarity position (+ and -).
- Do not short circuit battery terminals.
- Remove batteries during long periods of non-use. Always remove exhausted batteries from product. Dispose of batteries properly.
- Use caution when opening battery compartment as some batteries may leak, explode or catch on fire.
- Do not submerge in water or other liquids.
- Do not dispose of this product in a fire. The batteries inside may explode or leak.
- Only batteries of the same or equivalent type as recommended are to be used.
- Do not charge non-rechargeable batteries. Remove rechargeable batteries before charging. Do not mix old and new batteries.

The vibration/music box requires 2 "AA" Alkaline batteries (not included).

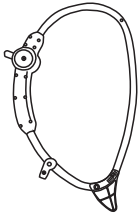


This symbol on the product or its packaging indicates that this product must not be disposed of with your other household waste. Instead, it is your responsibility to dispose of your waste equipment by taking it to a designated collection point for the recycling of waste electrical and electronic equipment.

The separate collection and recycling of your waste equipment at the time of disposal will help conserve natural resources and ensure that it is recycled in a manner that protects human health and the environment. Please contact your local authority for more information about where you can drop off your waste for recycling.

# 5. Parts List

A



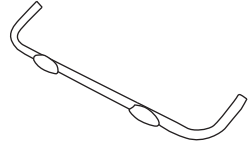
B



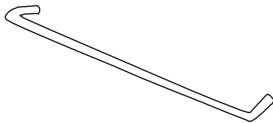
C



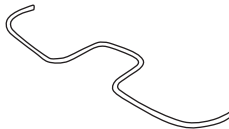
D



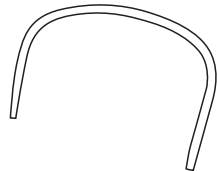
E



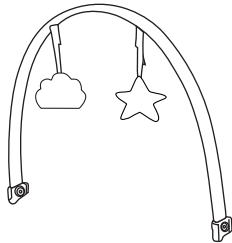
F



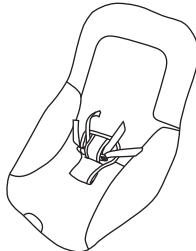
G



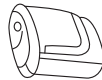
H



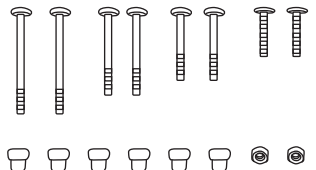
I



J

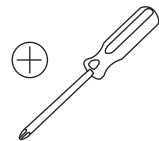


K



## Contained in your carton are:

N <sup>o</sup>	Part	Qty
A	Side frame	2
B	Feet	2
C	Cap	2
D	Kickstand	1
E	Cross brace	1
F	Music box connector tube	1
G	Rear connector tube	1
H	Toy bar (with 2 x toys) *toys may vary from illustration	1
I	Seat pad	1
J	Music & Vibration box (batteries not included)	1
K	Screw fastenings	1




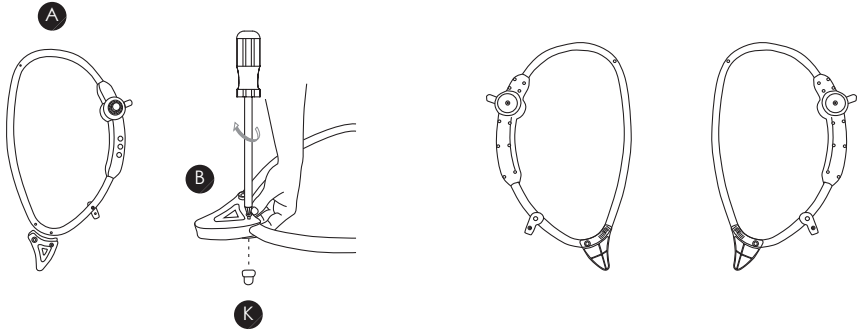
\*cross head screwdriver not included

## 6. Assembly


Check that all parts are present before starting assembly.

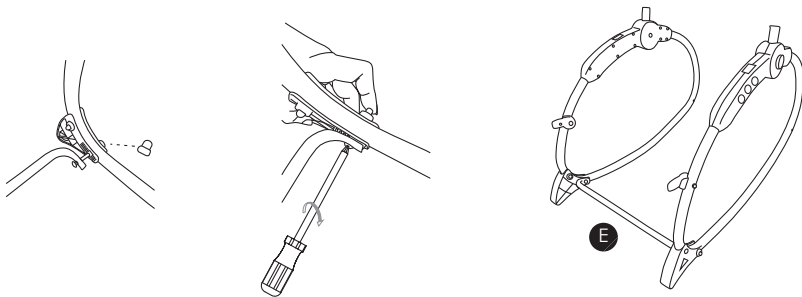
**6.1.** Take both of the side frames (A) and align them with their matching feet (B). Use the 30mm screw (K) and using a cross head screwdriver screw it into the hole on each side and tighten. Repeat assembly on both sides carefully.

 =30mmx2




**6.2.** Take both of the side frames (A) and place them upright in order to fit the cross brace (E) between them, and insert a 34mm screw (K) into the hole on each side of the frame and tighten.

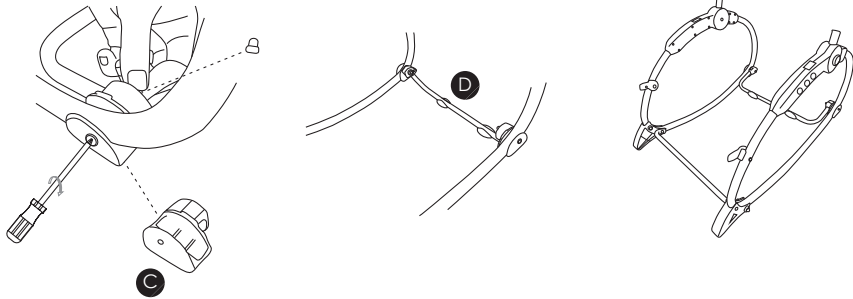
 =34mmx2



## 6. Assembly

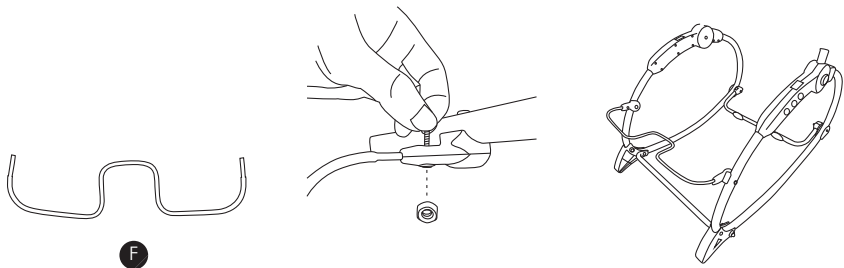
**6.3.** Place the kickstand (D) between the back of the side frames (A). Then place the caps (C) over both the kickstand and side frames. Secure them into place with a 44mm screw (K). Repeat assembly on both sides carefully

 = 44mmx2



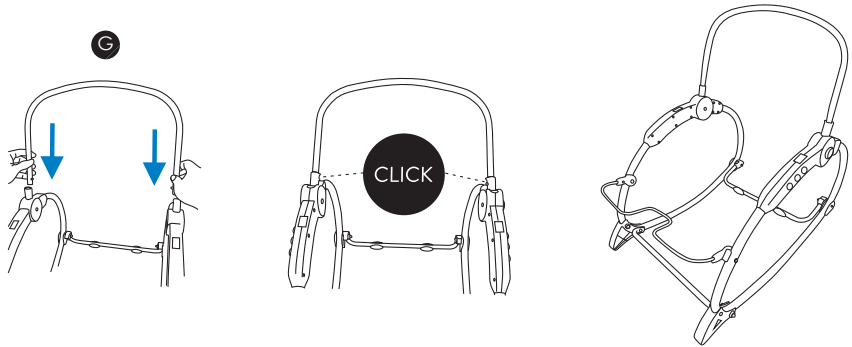
**6.4.** Insert both ends of the music box connector tube (F) into the plastic holes at either side of the frame, insert a 13mm screw (K) into the hole on each side of the front of the frame and tighten.

 = 13mmx2

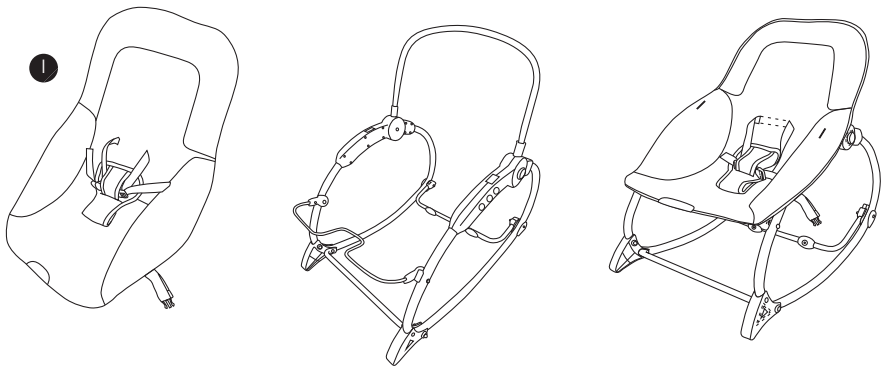


## 6. Assembly

**6.5.** Insert both ends of the rear connector tube (G) into the plastic part of the frame. Make sure you hear a “click” on each side, pull the rear connector tube up to be sure it is in a secure position.



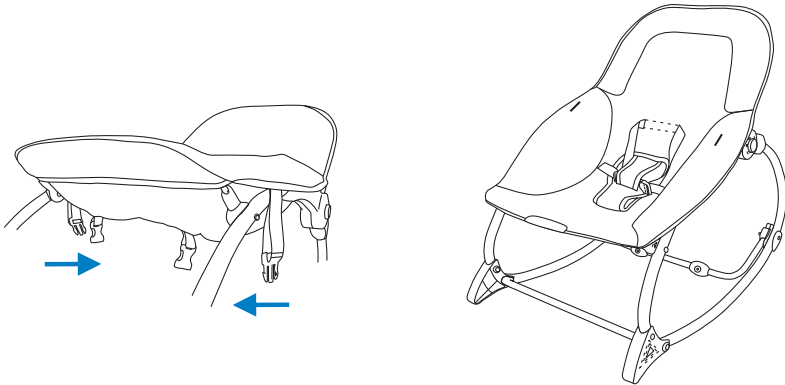
**6.6.** Fit the top of the seat pad (I) onto the rear connector tube (G). Next fit the lower part of the seat pad onto the music box connector tube (F).



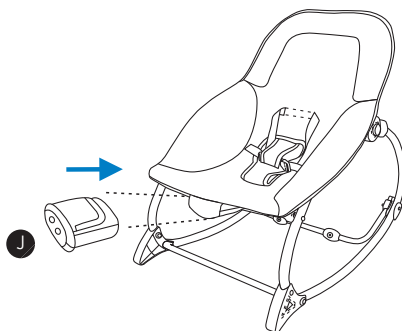


## 6. Assembly

**6.7.** Fasten the buckles on the under side of the seat pad. Make sure you hear a “click”.



**6.8.** Prepare two piece 2 x “AA” alkaline batteries, loosen the screw in the battery compartment door and remove the door , insert the batteries in the correct polarity, replace the compartment door.(batteries are not included in the product). Insert the music box (J) into the music box tube.



## 6. Assembly

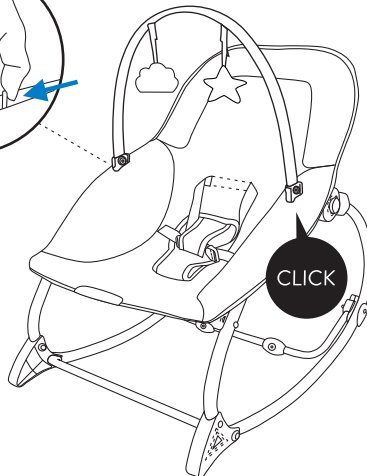
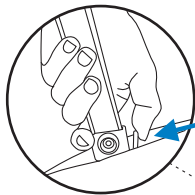
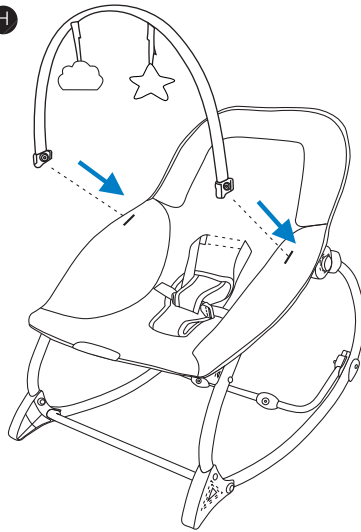
6.9. Insert the toy bar into the sides of the rocker, please notice both clips should "click" when in place.



### WARNING!

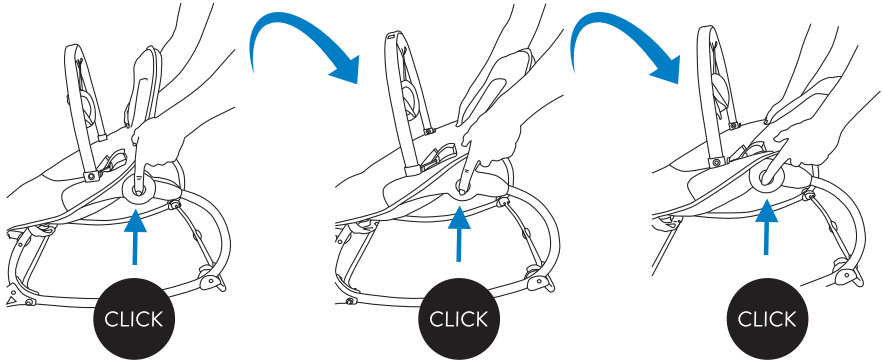
The toy bar is NOT a handle.  
Never attempt to carry the  
reclined cradle by the toy bar.

H

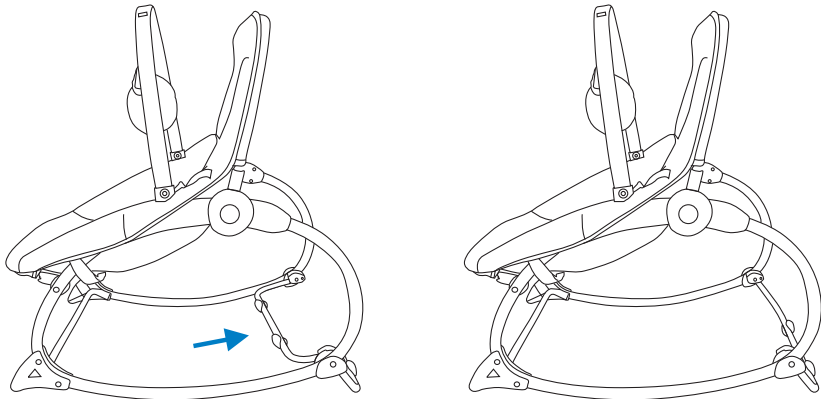


## 7. Adjusting

**7.1.** To switch to different backrest positions press the plastic button on either side to adjust to the desired height. Make sure you hear a “click” to be sure it is in a secure position.



**7.2.** To switch to a rocking mode lift the kickstand (D) under the rocker. To switch into a stationary mode, push the kickstand out to prevent rocking.



**Reclining cradle mode:** Do not use if your child can sit up unaided, roll over and can push itself up onto their hands and knees. Suitable from birth (max. weight 9kg).

**Upright toddler mode:** Suitable for one child when they are able to sit up unaided (max. weight 15kg).

## 8. Safety Harness

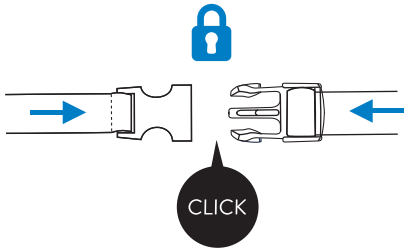
**8.1.** Place baby in the rocker with the crotch strap positioned between their legs. Fasten the buckles on both sides of the restraint. A “click” will signal buckle is secure. Adjust the sliders on both straps to achieve a snug, comfortable fit. To release, press the clips on the buckles and remove the harness strap.



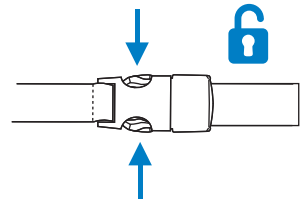
### **WARNING!**

**ALWAYS use the restraint system.**

**Attaching:**



**Removing:**



## 9. Vibration/Music Box

**9.1.** The vibration/music box has 3 vibration speeds.

Press the vibration button to start vibration. Continue pressing the button to increase the vibration speed. When on the fastest vibration, press the button again to turn off the vibration. There are 8 melodies with 3 volumes.

Press the music button to start the melody. Press the button a second and third time to increase the volume. Pressing the button another time will move to a new melody. The melody will automatically stop.

**Vibration:**



**Music:**



### **WARNING!**

**The vibration/ music box is not a toy.**

**Do not allow children to play with it. ALWAYS install unit on the rocker as instructed.**

## 10. Care and Maintenance

### 10.1. CLEANING


- The fabric cover is removable for easier cleaning.
- Do not wash the fabric cover. Spot clean only using soft sponge with diluted detergent or water. Do not rub. Dry in shade.
- Do not iron.
- Do not dry clean.
- Do not wash the toys. Wipe clean only using a soft sponge with diluted detergent or water. Do not rub.
- Clean metal or plastic components with mild detergent and warm water.
- Never use abrasive, ammonia based, bleach based or spirit type cleaners.
- Ensure the product is fully dry before use or storage.

### 10.2. MAINTENANCE

- All assembly fittings are to be tightened properly.
- Inspect regularly and re-tighten as necessary.
- Store product in a dry location away from any heat sources, and not in the sun.



If you have any questions or concerns regarding this product,  
do not hesitate to contact our expert team online  
via [online4baby.com/contact-us](https://online4baby.com/contact-us)

Feeling social?    
[online4baby.com](https://online4baby.com)

Imported by Online4baby Ltd,  
Meadowbank, Tweedale Way, Oldham, OL9 8EH, UK