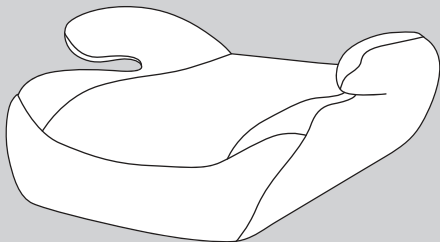


Travel and Go Eco Booster Seat

Instruction manual



**IMPORTANT! READ CAREFULLY
AND KEEP FOR FUTURE REFERENCE.**

Warning: A child's safety is your responsibility.

This product is tested and approved to ECE R44/04.

1. Contents

1. Contents02
2. Welcome02
3. Safety instructions03-04
4. Installation positions05
5. Parts List06
6. Installation07
6.1. Group 2 (15-25kg) Installation using 3-point vehicle seat belt07
6.2. Group 3 (22-36kg) Installation using 3-point vehicle seat belt08
7. Care and maintenance09
7.1. Maintenance09
7.2. Cleaning09

2 .Welcome

Thank you for purchasing the Puggle Travel and Go Eco Booster Seat.

Please read the instructions and warnings carefully before use to ensure safe and satisfactory operation of your Puggle Travel and Go Eco Booster Seat.

If you have a query with this product or require replacement parts, please contact Online4Baby online at online4baby.com/contact-us.

3 .Safety Instructions

Notice

This is a "Universal" child restraint. It is approved to Regulation No. 44, 04 series of amendments, for general use in vehicles and it will fit most, but not all, car seats.

A correct fit is likely if the vehicle manufacturer has declared in the vehicle handbook that the vehicle is capable of accepting a "Universal" child restraint for this age group.

This child restraint has been classified as "Universal" under more stringent conditions than those which applied to earlier designs which do not carry this notice.

Only suitable if the approved vehicles are fitted with 3 point safety belt, approved to UN/ECE Regulation No. 16 or other equivalent standards. If in doubt, consult either the child restraint manufacturer or the retailer.

IMPORTANT! READ CAREFULLY BEFORE USE AND KEEP FOR FUTURE REFERENCE.

Read this user manual BEFORE installing your booster. Incorrect installation could endanger your child. Please always keep the instruction manual with the booster for future reference.

- **WARNING:** NO child restraint can guarantee full protection from injury in an accident. However, proper use of a child restraint will reduce the risk of serious injury or death to your child.
- **WARNING:** Assembly and installation operations must be carried out by adults.
- **WARNING:** For the correct usage of the airbag in combination with the seat; read the vehicle handbook.
- **WARNING:** DO NOT allow child restraint straps to become twisted, keep them flat.
- **WARNING:** DO NOT install or use this booster without following the instructions in this manual or you may put your child at serious risk of injury or death.
- **WARNING:** DO NOT make any modifications to this booster or use it along with component parts from other manufacturers.
- **WARNING:** When using this child restraint system, the belt must be used correctly; make sure that the lap belt is not above the child's belly.
- **WARNING:** DO NOT leave this booster unsecured in your vehicle because an unsecured booster can be thrown around and may injure occupants in a sharp turn, sudden stop, or collision. Remove it if not in regular use.
- **WARNING:** DO NOT use this child restraint without the seat cover.
- **WARNING:** The seat cover should not be replaced with any seat cover besides the ones recommended by the manufacturer. The seat cover constitute an integral part of the child restraint performance.
- **WARNING:** DO NOT put anything other than the recommended seat cover in this child restraint.
- **WARNING:** DO NOT allow the car restraint harness or belt guide to become trapped or caught in the vehicle seat or door.
- **WARNING:** NEVER leave your child unattended with a child restraint.

3 .Safety Instructions

- **WARNING:** NEVER use a second-hand booster or a booster whose history you do not know because they may have structural damage that endangers your child's safety.
- **WARNING:** Please keep this child restraint away from sunlight, otherwise it may be too hot for the child's skin.
- **WARNING:** DO NOT place other items on top of the booster if it is in the car boot to prevent damage.
- **WARNING:** DO NOT continue to use this booster after it has suffered any violent crash. Replace immediately as there may be invisible structural damage from the crash.
- **WARNING:** Remove this booster from the vehicle seat when it is not in use.
- **WARNING:** To avoid suffocation, remove plastic bag and packaging materials before using this product.
- **WARNING:** The plastic bag and packaging materials should then be kept away from babies and children.
- **WARNING:** Consult the retailer for issues concerning maintenance repair and part replacement.
- **WARNING:** DO NOT install this booster under the following conditions: vehicle seats facing sideways or rearward with respect to the running direction of the vehicle. Vehicle seats movable during installation.
- **WARNING:** In case of emergency or accidents, it is most important to have your child taken care of with first aid and medical treatment immediately.

4. Installation Positions

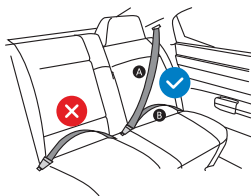
In the vehicle rear seats. ✓

This child safety seat may only be installed in front seats in the following circumstances:

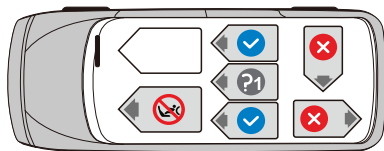
1. If the vehicle is not equipped with rear seats.
2. If all rear seats are already occupied by children exceeding 135cm in height.
3. If it is not possible to install all child restraint systems in the rear seats.

Notice

- If your center rear passenger seat is only fitted with a 2-point lap belt the child safety seat must not be used. It is only suitable with a 3-point safety belt. ?1

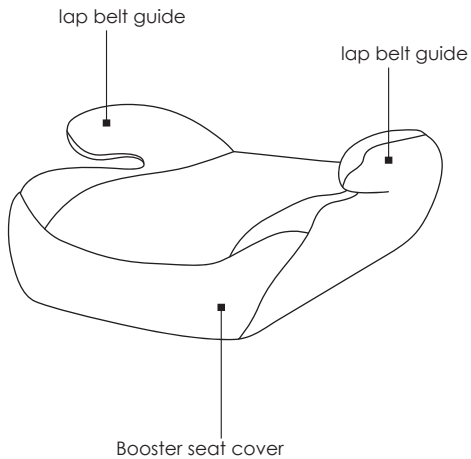


- ✓ 3-point belt
- ✗ 2-point belt
- A Diagonal belt
- B Lap belt



! WARNING!
Refer to the vehicle's instruction manual to install the seat in the front seat.

5. Parts List

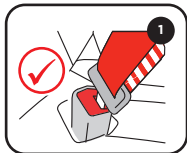


6. Installation

6.1. GROUP 2 (15-25KG)

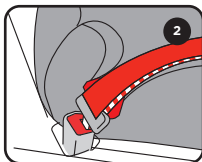
INSTALLATION USING 3-POINT VEHICLE SEAT BELT

1. Sit your child in the booster seat.



Note. the booster seat must be placed as close as possible to the vehicle seat backrest, to allow the most comfortable position for the child.

2. Pull out the vehicle seat belt and guide it in front of your child to the vehicle seat buckle.

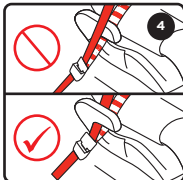


Engage the buckle tongue into the vehicle seat buckle (fig. 1).

3. Place the diagonal seat belt section and lap belt section on the side of the vehicle seat belt buckle in the lower belt guide (fig. 2).



Note. Ensure both the diagonal seat belt and lap belt pass under the lap belt guide (fig. 3/ 4).



4. Place the lap belt section on the other side of the child seat in the lower belt guide (fig. 5).



CAUTION!

The lap belt section must lie as low as possible over the child's hips on both sides and the diagonal belt section must be positioned over the center of the child's shoulder.

6. Installation

6.1. GROUP 3 (22-36KG)

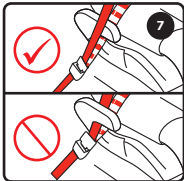
INSTALLATION USING 3-POINT VEHICLE SEAT BELT

1. See section 6.1. and repeat steps 1-2.

2. Place the lap belt section (on the side of the vehicle seat belt buckle) underneath the lap belt guides and place the diagonal belt section over the armrest (fig. 6).



Note. Ensure the diagonal seat belt passes over the lap belt guide (fig. 7).



3. Place the lap belt section on the other side of the child seat in the lower belt guide (fig. 8).



CAUTION!

The lap belt section must lie as low as possible over the child's hips on both sides and the diagonal belt section must be positioned over the center of the child's shoulder.

7. Care and Maintenance

7.1. MAINTENANCE

It is important to only use the original upholstery as this is an essential part of the functionality.

Please remove the booster seat from the vehicle seat if not in use. Put the booster seat in a cool, dry place where your child cannot access it.

7.2. CLEANING

DO NOT wash fabrics. Spot clean only using a soft sponge with diluted detergent or water. Dry in shade and not in the sun. Do not iron.

Do not dry clean. Wipe metals and plastic parts with a mild detergent and lukewarm water. DO NOT use chemical cleaners or bleaches (ammonia, petrol, solvents etc.) under any circumstances.



If you have any questions or concerns regarding this product,
do not hesitate to contact our expert team online
via online4baby.com/contact-us

Feeling social?  
online4baby.com

Imported by Online4baby Ltd,
Meadowbank, Tweedale Way, Oldham, OL9 8EH