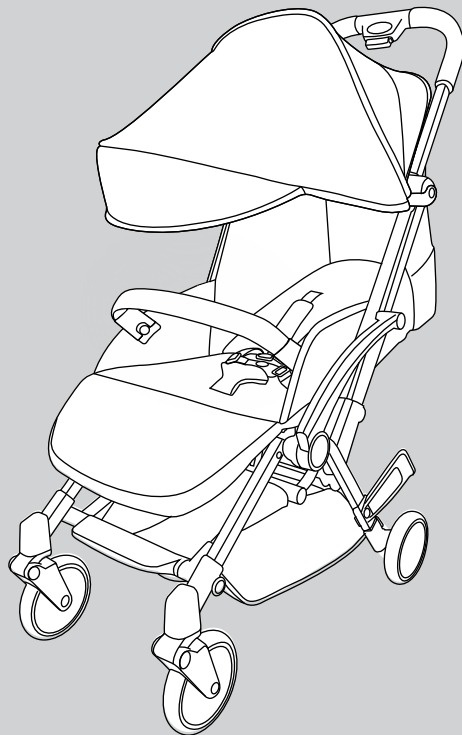


Seattle Fold and Go Compact Pushchair

Instruction manual



**IMPORTANT - RETAIN FOR FUTURE
REFERENCE, READ CAREFULLY.**

Warning: A child's safety is your responsibility.

This product is tested and approved to
EN 1888-2: 2018+A1: 2022

1. Welcome

Thank you for purchasing the **Puggle Seattle Fold and Go Compact Stroller**.

Please read the instructions and warnings carefully before use to ensure safe and satisfactory operation of your **Puggle Seattle Fold and Go Compact Stroller**.

If you have a query with this product or require replacement parts, please contact Online4baby online at online4baby.com/contact-us.

2. Safety instructions

IMPORTANT! READ THESE INSTRUCTIONS CAREFULLY BEFORE ASSEMBLY AND USE.

Before using, remove and dispose of any plastic bags and other packaging (e.g. fasteners, fixing ties, etc.) and keep them out of reach of children.

WARNING! This vehicle is intended for one child from birth (0 months) and up to a maximum weight of 22kg or 4 years, whichever comes first.

WARNING! Stroller is not suitable for children under 6 months when angle of seat and backrest less than 150 degrees.

WARNING! Never leave the child unattended.

WARNING! Ensure that all locking devices are engaged before use.

WARNING! To avoid injury ensure that your child is kept away when unfolding and folding this product.

WARNING! Do not let your child play with this product.

WARNING! ALWAYS USE THE HARNESS RESTRAINT SYSTEM.

WARNING! Always use the crotch strap in combination with the waist belt section of the harness.

WARNING! This product is not suitable for running or skating.

WARNING! Use the most reclined position for new born babies.

WARNING! Any load attached to the handle affects the stability of the stroller.

- YOUR CHILD'S SAFETY IS YOUR RESPONSIBILITY.
- Do not let children play with or hang on the stroller.
- Do not overload this stroller with additional children, goods or accessories.
- Bags and other items should not be hung from the handle as this can affect the stability of the stroller.
- Overloading, incorrect folding and the use of non-approved accessories is unsafe and may damage or break this stroller.
- Do not use parts or accessories which are not approved by the manufacturer.
- Always apply the parking brake when the stroller is stationary.

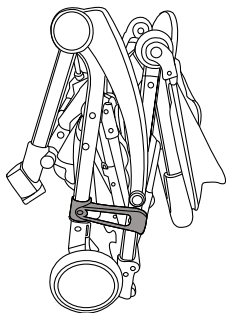
2. Safety instructions

- Ensure the parking brake is engaged during the loading and unloading of children.
- Do not allow your child to climb into the stroller.
- Never leave a raincover, hood or apron on indoors, in a hot atmosphere or near a heat source as your child may overheat.
- Be careful when going up or down kerbs.
- Remove your child and fold the stroller when going up or down escalators.
- If your stroller is used by someone unfamiliar with it e.g. Grandparents, always show them how it works.
- Do not use this stroller near an open fire or exposed flame.
- Take care in windy conditions.
- To prevent damage, always remove the raincover before folding the stroller.
- Do not place anything on top of the raincover.
- To prevent your child overheating, always fold or remove a raincover when indoors or in warm environments.
- A basket is provided for the carriage of 3kg of items evenly distributed.

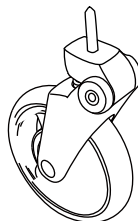
This product conforms to EN 1888-2:2018+A1:2022

3. Parts List - Stroller

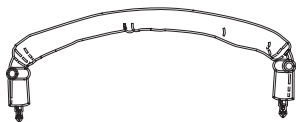
A



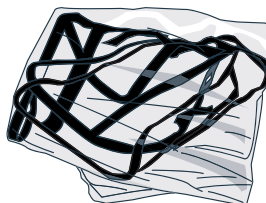
B



C



D



Contained in your carton are:

Nº	Part	Qty
A	Stroller	1
B	Front wheels	2
C	Bumper bar	1
D	Raincover	1

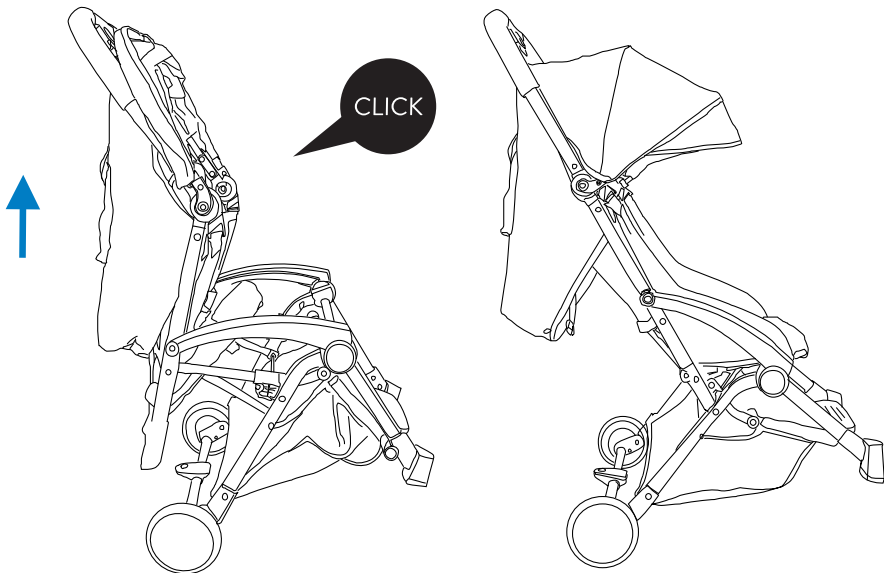
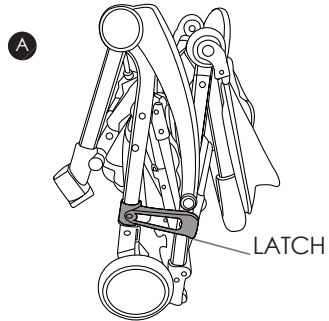
4. Assembly

4.1. STROLLER ASSEMBLY

Unpack all contents and check that all parts are present before starting assembly.

Please refer to the parts list.

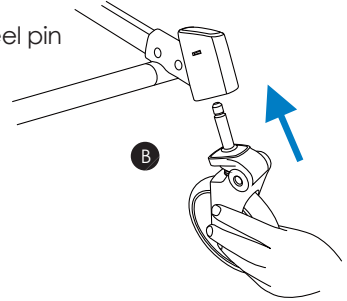
To unfold the stroller (A) release the locked folding latch located above the rear wheels. Hold the handle and lift up the frame until you hear a 'click', the stroller will then be fully open and secure.



4. Assembly

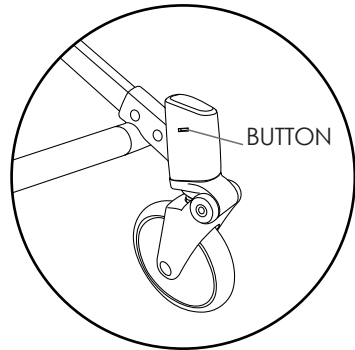
4.2. FRONT WHEEL ASSEMBLY

To assemble the front wheels, insert the front wheel steel pin (B) into the front leg until you hear the 'click'.



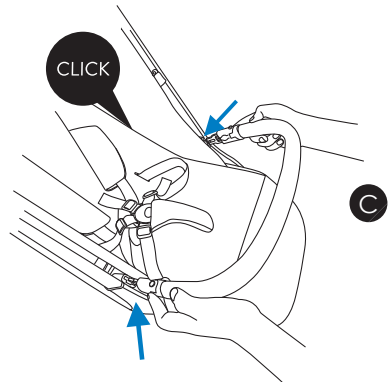
4.2. FRONT WHEEL DISASSEMBLY

To detach the front wheels, press in the button on the side of the front leg and pull out the front wheel to detach.



4.3. FRONT BUMPER ASSEMBLY

To assemble the front bumper, insert the front bumper adapter (C) into both of the side holes until you hear the 'click'.

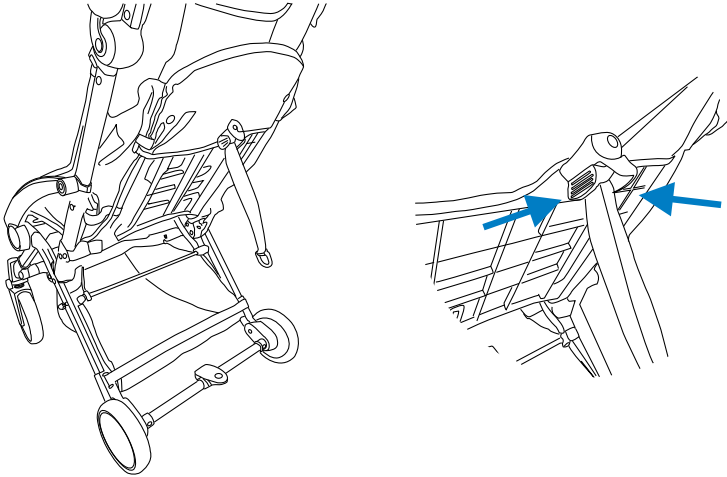


5. Backrest

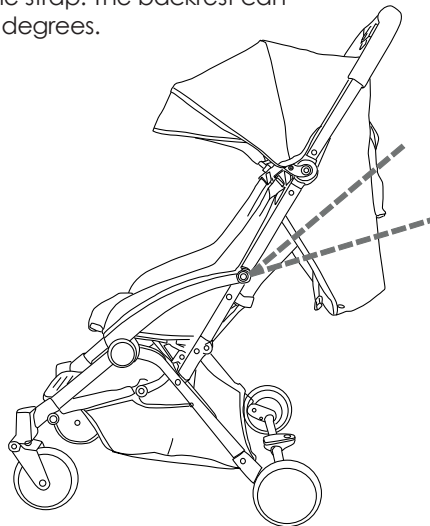
5.1. BACKREST ADJUSTMENT

Locate the backrest adjustment at the rear of the seat.

To adjust the backrest to an upper position pinch the recline button and push up while holding the recline strap.



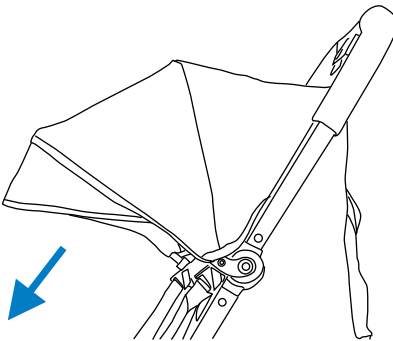
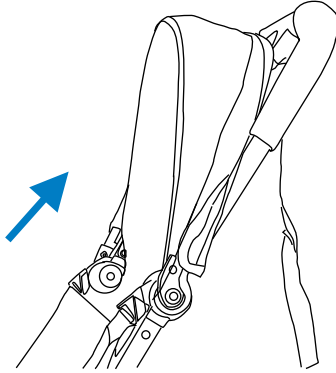
To adjust the backrest to a lower position pinch the recline button and pull down while holding the recline strap. The backrest can adjust between 105 degrees and 155 degrees.



6. Canopy

6.1. CANOPY ADJUSTMENT

The canopy can be opened or closed by pulling forward or backward on the canopy rim. There is a mesh air vent at the back of the stroller.

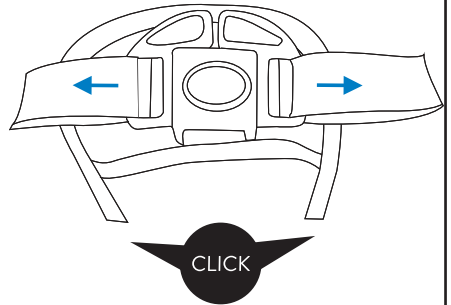


7. Harness

7.1. HARNESS ADJUSTMENT

Press the centre button to release the safety harness.

To secure the safety harness, slide the clip on both sides into the safety buckle until you hear a 'click'.

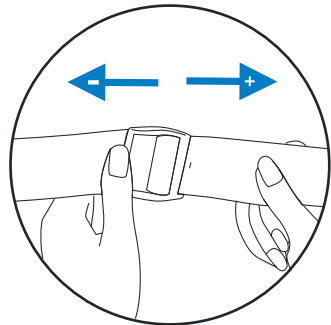


To shorten the seat belt length, pull the strap out of the tail belt and tighten. To extend the seat belt length, pull the strap in the opposite direction and tighten.



WARNING!

Always adjust the harness to fit your child correctly for their comfort and safety. A loose fitting harness can be very dangerous.

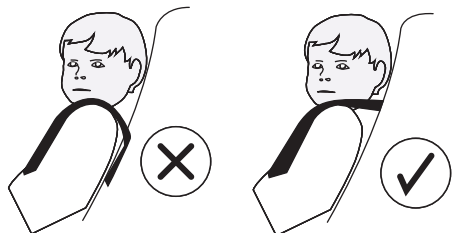


The stroller has 3 shoulder height positions. To adjust the height feed the buckle through to the front. At the front adjust to the correct height and feed the buckle back through to secure.



WARNING!

Adjust the shoulder strap height according to baby height.

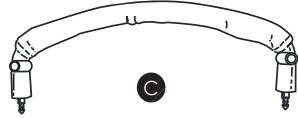


8. Bumper bar assembly

8.1. BUMPER BAR ASSEMBLY

Insert the ends of the bumper bar into the attachment points on the stroller frame.

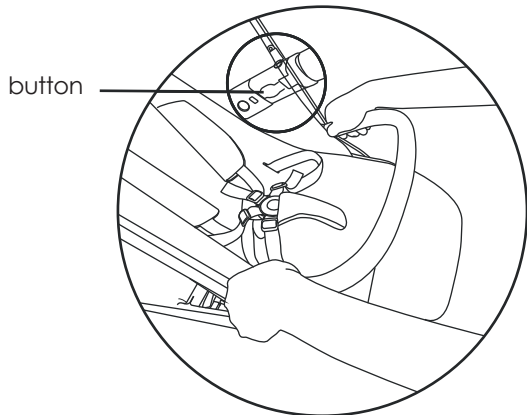
Wait to hear them “click” into position. Lift gently to ensure the bumper bar is locked into place.



8.2. BUMPER BAR DISASSEMBLY

To remove, press buttons located either side of the bumper bar housing. Lift to remove bumper bar from stroller.

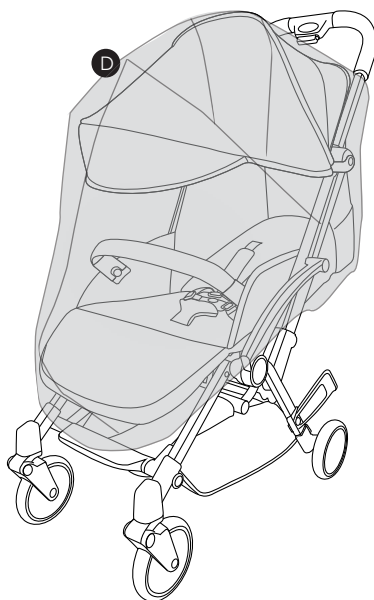
WARNING! To prevent accidental injury, do not remove the front bumper when children are in the stroller.



9. Raincover

9.1. RAINCOVER ASSEMBLY

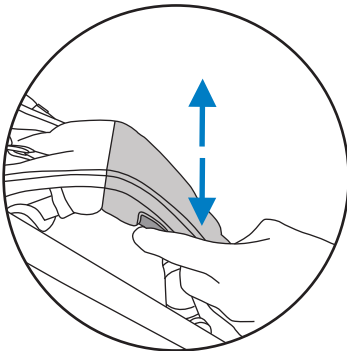
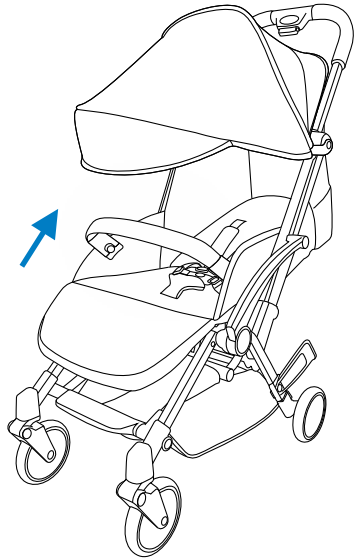
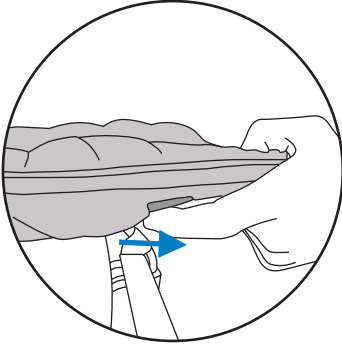
Locate the raincover (D). Pull the raincover down over the stroller starting at the top of the canopy and pulling down towards the footrest.



10. Footrest adjustment

10.1. FOOTREST ADJUSTMENT

Locate the adjustment levers underneath either side of the footrest.
Pull levers towards you.
Adjust to the required position.



11. In Use

11.1. BRAKES

To engage the brake push down brake locking pedal.
Lift up pedal to release brake.

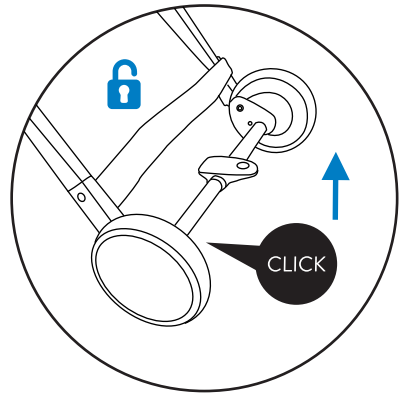
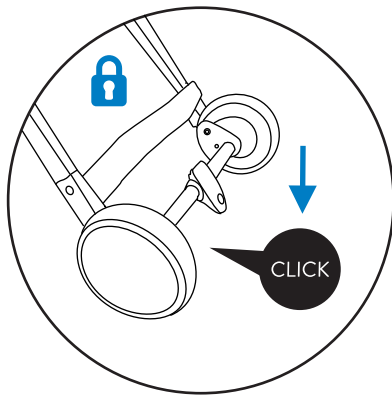
The brake will “click” when locked into position.

WARNING!

Always apply the parking brake
when the stroller is stationary.

WARNING!

Ensure the parking brake is
engaged during the loading and
unloading of children.



12. Folding

12.1. STROLLER DISASSEMBLY

Adjust the backrest to its lowest position before folding the stroller.

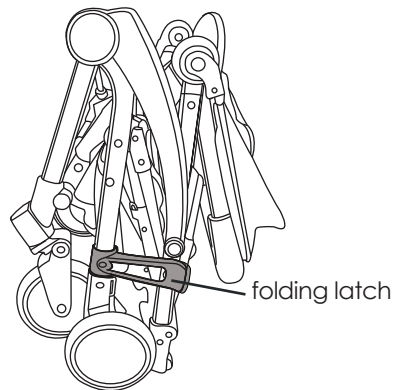
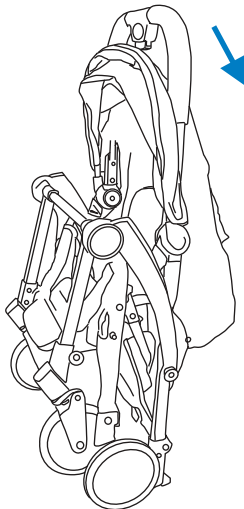
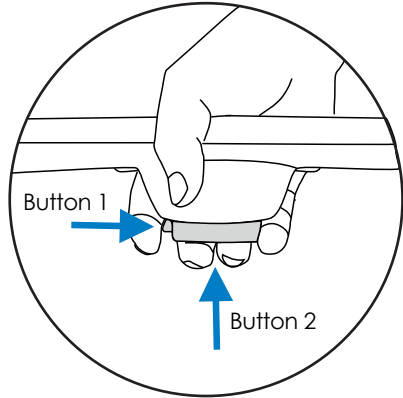
Hold the handle and press button 1 while pressing button 2 at the same time.

Push the handle forward and down to fold the stroller.

After folding, make sure to pull the handle all the way to the back whilst still pressing in both buttons.

Close the folding latch to ensure it's locked securely.

Note. the bumper bar can be used as a handle or it can be removed.



13. Care and Maintenance

- This product requires regular maintenance to ensure correct and safe performance.
- All assembly fittings are to be tightened properly.
- Always check your stroller for loose screws, worn parts, torn material or stitching.
- Replace or adjust parts as needed.
- Lubricate moving parts regularly, especially the wheels.
- Wipe metals and plastics clean with a damp cloth.
- Sponge clean fabrics with warm soapy water. Rinse well with clean water to avoid staining. Dry in shade.
- Do not bleach.
- Do not iron.
- Do not dry clean.
- Do not use abrasive pads, bleach or strong household cleaners.



If you have any questions or concerns regarding this product,
do not hesitate to contact our expert team online
via online4baby.com/contact-us

Feeling social?  
online4baby.com

Imported by Online4baby Ltd,
Meadowbank, Tweedale Way, Oldham, OL9 8EH