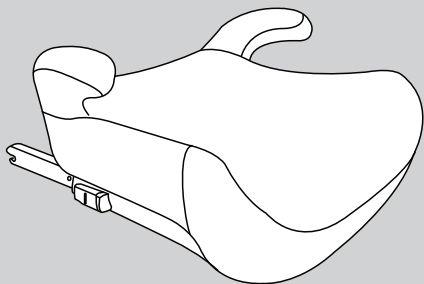


Travel and Go 125-150cm i-Size ISOFIX Eco Booster Seat

Instruction manual



R129/03

**IMPORTANT! READ CAREFULLY
AND KEEP FOR FUTURE REFERENCE.**

Warning: A child's safety is your responsibility.

Suitable for children 125-150cm in height.

This product is tested and approved to ECE R129/03.

1. Contents

1. Contents02
2. Welcome02
3. Safety instructions03-04
4. Installation positions05
5. Parts List06
6. Installation07
6.1. ISOFIX installation07
6.2. Installation using 3-point vehicle seat belt08
6.3. Removing the booster seat09
7. Care and maintenance10
7.1. Maintenance10
7.2. Cleaning10

2 .Welcome

Thank you for purchasing the Puggle Travel and Go 125-150cm i-Size ISOFIX Eco Booster Seat.

Please read the instructions and warnings carefully before use to ensure safe and satisfactory operation of of your Puggle Travel and Go 125-150cm i-Size ISOFIX Eco Booster Seat.

If you have a query with this product or require replacement parts, please contact Online4Baby online at online4baby.com/contact-us.

3 .Safety Instructions

Notice

This is a Universal booster cushion Enhanced Child Restraint System. It is approved according to UN Regulation No.129, for use in i-Size compatible and universal vehicle seating positions as indicated by vehicle manufacturer in the vehicle user's manual. If in doubt, consult the Enhanced Child Restraint System manufacturer or the retailer.

IMPORTANT! READ CAREFULLY BEFORE USE AND KEEP FOR FUTURE REFERENCE.

Read this user manual BEFORE installing your seat. Incorrect installation could endanger your child. Please always keep the instruction manual with the booster for future using.

- **WARNING:** NO child restraint can guarantee full protection from injury in an accident. However, proper use of a child restraint will reduce the risk of serious injury or death to your child.
- **WARNING:** Assembly and installation operations must be carried out by adults.
- **WARNING:** To use this child restraint with the ISOFIX connections according to the ECE R129 Regulation, your child must meet the following requirements:
Child height 125-150cm.
- **WARNING:** For the correct usage of the airbag in combination with the seat; read the vehicle handbook.
- **WARNING:** DO NOT allow child restraint straps to become twisted, keep them flat.
- **WARNING:** DO NOT install or use this booster without following the instructions in this manual or you may put your child at serious risk of injury or death.
- **WARNING:** DO NOT make any modifications to this booster or use it along with component parts from other manufacturers.
- **WARNING:** When using this child restraint system, the belt must be used correctly; make sure that the lap belt is not above the child's belly.
- **WARNING:** DO NOT leave this booster unsecured in your vehicle because an unsecured booster can be thrown around and may injure occupants in a sharp turn, sudden stop, or collision. Remove it if not in regular use.
- **WARNING:** DO NOT use this child restraint without the seat cover.
- **WARNING:** The seat cover should not be replaced with any seat cover besides the
- **WARNING:** ones recommended by the manufacturer. The seat cover constitute an
- **WARNING:** integral part of the child restraint performance.
- **WARNING:** DO NOT put anything other than the recommended seat cover in this child restraint.
- **WARNING:** DO NOT allow the car restraint harness or belt guide to become trapped or caught in the vehicle seat or door.
- **WARNING:** NEVER leave your child unattended with a child restraint.
- **WARNING:** NEVER use a second-hand booster or a booster whose history you do not know because they may have structural damage that endangers your child's safety.

3 .Safety Instructions

- **WARNING:** Please keep this child restraint away from sunlight, otherwise it may be too hot for the child's skin.
- **WARNING:** DO NOT place other items on top of the booster if it is in the car boot to prevent damage.
- **WARNING:** DO NOT continue to use this booster after it has suffered any violent crash. Replace immediately as there may be invisible structural damage from the crash.
- **WARNING:** Remove this booster from the vehicle seat when it is not in use.
- **WARNING:** To avoid suffocation, remove plastic bag and packaging materials before using this product.
- **WARNING:** The plastic bag and packaging materials should then be kept away from babies and children.
- **WARNING:** Consult the retailer for issues concerning maintenance repair and part replacement.
- **WARNING:** Frequently check the ISOFIX attachments for dirt and clear them if necessary. Reliability can be affected by ingress of dirt, dust, food particles etc.
- **WARNING:** DO NOT install this booster under the following conditions: vehicle seats facing sideways or rearward with respect to the running direction of the vehicle. Vehicle seats movable during installation.
- **WARNING:** This is an universal booster cushion. It is approved to Regulation ECE R129, compatible all type of vehicles. Please refer to the vehicle manufacturer's website or consult your dealer if there is anything unclear.
- **WARNING:** In case of emergency or accidents, it is most important to have your child taken care of with first aid and medical treatment immediately.

4. Installation Positions

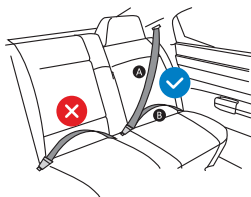
In the vehicle rear seats. ✓

This child safety seat may only be installed in front seats in the following circumstances:

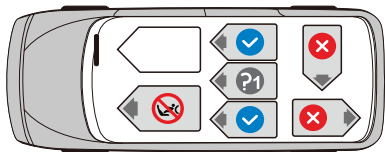
1. If the vehicle is not equipped with rear seats.
2. If all rear seats are already occupied by children exceeding 135cm in height.
3. If it is not possible to install all child restraint systems in the rear seats.

Notice

- If your center rear passenger seat is only fitted with a 2-point lap belt the child safety seat must not be used. It is only suitable with a 3 point safety belt. ?1

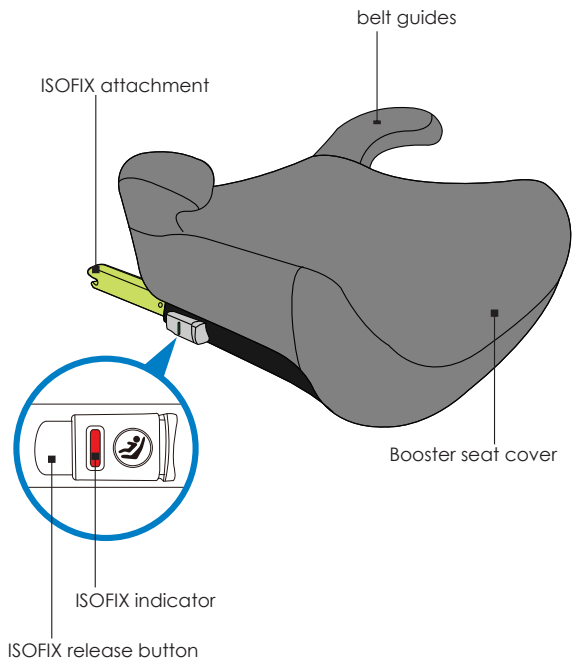


- ✓ 3-point belt
- ✗ 2-point belt
- A Diagonal belt
- B Lap belt



! **WARNING!**
Refer to the vehicle's instruction manual to install the seat in the front seat.

5. Parts List



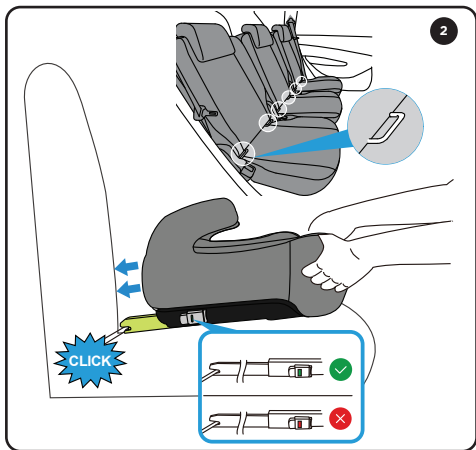
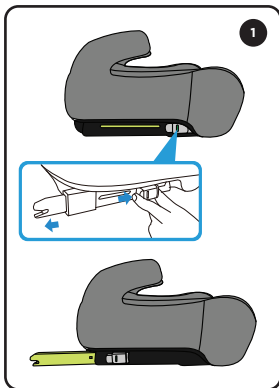
6. Installation

6.1. ISOFIX INSTALLATION

When installing the booster seat in the front vehicle seat make sure the backrest of the vehicle seat is in an upright position.

1. Position the booster seat inside the vehicle. Squeeze and pull the ISOFIX release buttons to release the ISOFIX attachments (fig. 1). The ISOFIX attachments lock in position only when they are fully extended.

2. Attach the ISOFIX attachments to the ISOFIX anchorage points in the vehicle seat (fig. 2). Make sure that all ISOFIX indicators are GREEN. Push the seat as far as possible towards the backrest of the vehicle seat.



6. Installation

6.2. INSTALLATION USING 3-POINT VEHICLE SEAT BELT

Note. If the seat cannot be used in combination with ISOFIX anchorage points in the vehicle seat, the ISOFIX attachments can be stowed inside the seat and the seat can be used in combination with the 3-point belt only.

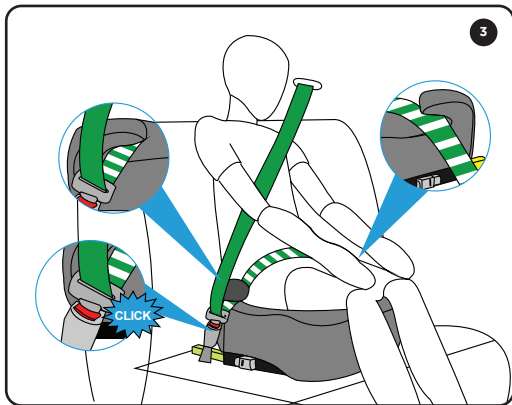
1. Position the vehicle belt in front of the child and lock the belt into the buckle of the vehicle (fig. 3).
2. Place the lap belt section of the vehicle belt under the belt guides (fig. 3).



CAUTION!

The lap belt section must lie as low as possible over the child's hips on both sides.

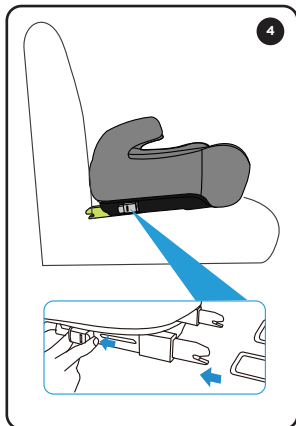
3. Ensure the vehicle belt is not twisted.



6. Installation

6.3. REMOVING THE BOOSTER SEAT

1. Squeeze the ISOFIX release button to release and pull back the ISOFIX attachments. (fig. 4).
2. Remove the booster seat from the vehicle.



7. Care and Maintenance

7.1. MAINTENANCE

It is important to only use the original upholstery as this is an essential part of the functionality.

Please remove the booster seat from the vehicle seat if not in use. Put the booster seat in a cool, dry place where your child cannot access it.


7.2. CLEANING

DO NOT wash fabrics. Spot clean only using a soft sponge with diluted detergent or water. Dry in shade and not in the sun. Do not iron.

Do not dry clean. Wipe metals and plastic parts with a mild detergent and lukewarm water. DO NOT do not use chemical cleaners or bleaches (ammonia, petrol, solvents etc.) under any circumstances.



If you have any questions or concerns regarding this product,
do not hesitate to contact our expert team online
via [online4baby.com/contact-us](https://www.online4baby.com/contact-us)

Feeling social?  
[online4baby.com](https://www.online4baby.com)

Imported by Online4baby Ltd,
Meadowbank, Tweedale Way, Oldham, OL9 8EH