

Lockton 360° Rotate Car Seat

Instruction manual



**IMPORTANT - RETAIN FOR FUTURE
REFERENCE, READ CAREFULLY.**

Warning: A child's safety is your responsibility.

This product is tested and approved to ECE R 44/04

1. Contents

| | |
|--|-------|
| 1. Contents | 02 |
| 2. Welcome | 02 |
| 3. Safety instructions | 03-04 |
| 4. Installation positions | 05 |
| 5. Parts List | 06 |
| 6. Adjusting the car seat | 07 |
| 6.1. Adjusting buckle | 07 |
| 6.2. Adjusting harness | 07 |
| 6.3. Adjusting headrest | 08 |
| 6.4. Adjusting recline positions | 08 |
| 6.5. Rotating seat | 09 |
| 6.6. Adjusting ISOFIX | 09 |
| 6.6.1. ISOFIX Installation | 10 |
| 6.6.2. Remove ISOFIX | 11 |
| 6.7. Adjusting top tether | 11 |
| 6.8. Remove and install harness | 12 |
| 7. Installation | 13 |
| 7.1. Group 0+ (0-13 kg) Birth to approx. 18 months | 13 |
| 7.1.1. Installation using ISOFIX connectors and top tether | 13 |
| 7.1.2. Installation using 3-point vehicle seat belt | 14-15 |
| 7.2. Group I (9-18 kg) approx. 9 months to 4 years | 15-16 |
| 7.3. Group II III (15-36 kg) approx. 3-12 years | 17-18 |
| 8. Care and maintenance | 18 |
| 8.1. Buckle care | 18 |
| 8.2. Cleaning the cover | 19 |

2 .Welcome

Thank you for purchasing the Puggle Lockton 360° Rotate Car Seat.

Please read the instructions and warnings carefully before use to ensure safe and satisfactory operation of of your Puggle Lockton 360° Rotate Car Seat.

If you have a query with this product or require replacement parts, please contact Online4Baby online at online4baby.com/contact-us.

3. Safety instructions

Notice

1. This is a "Universal" child restraint. It is approved to Regulation No. 44, 04 series of amendments, for general use in vehicles and it will fit most, but not all car seats.
2. A correct fit is likely if the vehicle manufacturer has declared in the vehicle handbook that the vehicle is capable of accepting a "Universal" child restraint for this age group.
3. This child restraint has been classified as "Universal" under more stringent conditions than those which applied to earlier designs which do not carry this notice.
4. If in doubt, consult either the child restraint manufacturer or the retailer.

This child restraint is classified for "Restricted/Semi-universal" use and is suitable for fixing into the seat positions of the following cars:

| <u>CAR</u> | <u>FRONT</u> | <u>REAR</u> |
|-----------------|---------------------|-------------------------|
| (see car lists) | <u>outer</u> Yes | <u>centre</u> Yes No |

Seat positions in other cars may also be suitable to accept this child restraint. If in doubt, consult either the child restraint manufacturer or the retailer.

Only suitable if the approved vehicles are fitted with 3-point safety belts and ISOFIX attachments, approved to UN/ECE Regulation No. 16 or other equivalent standards.

The Puggle Lockton 360° Rotate Car Seat is suitable for:

| Group | Weight | Approx. Age | Child Restraint Direction | Fittings Methods |
|-------|-------------|----------------|---------------------------|---------------------------------|
| 0+ | Birth-13 kg | 0 to 14 mths | Rearward-facing | 1. ISOFIX + Top Tether * |
| | | | | 2. 3-point seat belt ** |
| I | 9-18 kg | 9 mths - 4 yrs | Forward-facing | 1. ISOFIX + 3-point seat belt * |
| | | | | 2. 3-point seat belt ** |
| II | 15-25 kg | 3 to 7 yrs | Forward-facing | 1. ISOFIX + 3-point seat belt * |
| | | | | 2. 3-point seat belt ** |
| III | 22-36 kg | 6 to 12 yrs | Forward-facing | 1. ISOFIX + 3-point seat belt * |
| | | | | 2. 3-point seat belt ** |

* "Semi-Universal" installation

** "Universal" installation

3. Safety instructions

IMPORTANT! PLEASE READ THE FOLLOWING INSTRUCTIONS CAREFULLY BEFORE INSTALLING THE PRODUCT.

- **WARNING:** Please read these instructions carefully, as incorrect installation may result in serious injury. If any injuries should occur as a result of incorrect installation, the manufacturer will accept no responsibility.
- **WARNING:** Instruction illustrations are for informational purposes only. The child restraint system may contain small differences compared to the photographs or diagrams in the instruction manual.
- **WARNING:** This child safety seat is suitable for use as Group 0+/1/2/3 from birth to approx. 12 years age / 0-36 kg.
- **WARNING:** Do not use child restraint seat forward facing before the child's weight exceeds 9 kg.
- **WARNING:** The child must never be left unattended while seated in the safety seat.
- **WARNING:** Under no circumstances should the safety seat be installed in the front seat of the car opposite to the direction of travel if the car is equipped with an active airbag.
- **WARNING:** Ensure that the lap section of the harness is worn low down, so that the pelvis is firmly engaged.
- **WARNING:** The seat cover should not be replaced with any other than the one recommended by the manufacturer, because the cover constitutes an integral part of the restraint performance.
- **WARNING:** Never use the child safety seat without both the cover and pads provided.
- **WARNING:** Do not disassemble or modify this child safety seat or harness, as this may seriously compromise the function and safety of this product.
- **WARNING:** Child seats or accessories that are damaged or have been used incorrectly must be replaced.
- **WARNING:** Do not use any load bearing contact points other than those described in the instructions and marked in the child restraint.
- **WARNING:** Do not leave heavy objects unsecured inside the car, as these may injure the child in the event of an accident.
- **WARNING:** Ensure that no part of the child seat is caught in the door of the vehicle or in a reclining seat. In addition, ensure that the safety seat is correctly installed and secured.
- **WARNING:** Protect the child safety seat from direct sunlight, as metal and plastic fittings could become hot and can be harmful to the child.
- **WARNING:** This safety seat is only intended for use in a vehicle.
- **WARNING:** You must replace the child restraint system if it is involved in an accident. It may have unseen damage and may not protect your child as well as it should.
- **WARNING:** You must replace the child restraint system and the safety belts if they become worn or damaged. It is not recommended to purchase or use second hand child restraint seats as there may be unseen damage and the product safety cannot be guaranteed. The manufacturer only guarantees this product with the original owner.

4. Installation Positions

In the vehicle rear seats. ✓

This child safety seat may only be installed in front seats in the following circumstances: ?1

1. If the vehicle is not equipped with rear seats.
2. If all rear seats are already occupied by children exceeding 135cm in height.
3. If it is not possible to install all child restraint systems in the rear seats.

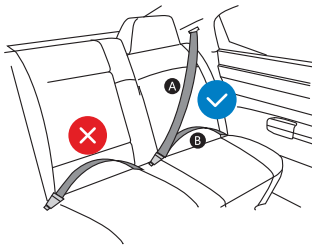
Group 0+ • Install rearward facing ✓

Group I • Install forward facing ✓

Group II III • Install forward facing (with vehicle 3-point seat belt) ✓

Notice

- **Never use in front passenger seats equipped with active airbag** ?1
- **If your center rear passenger seat is only fitted with a 2-point lap belt the child safety seat must not be used. It is only suitable with a 3 point safety belt.** ?2

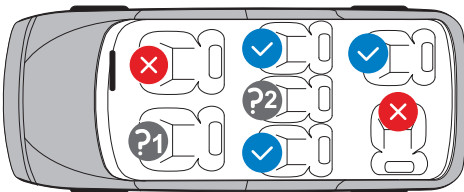


✓ 3-point belt

✗ 2-point belt

A Diagonal belt

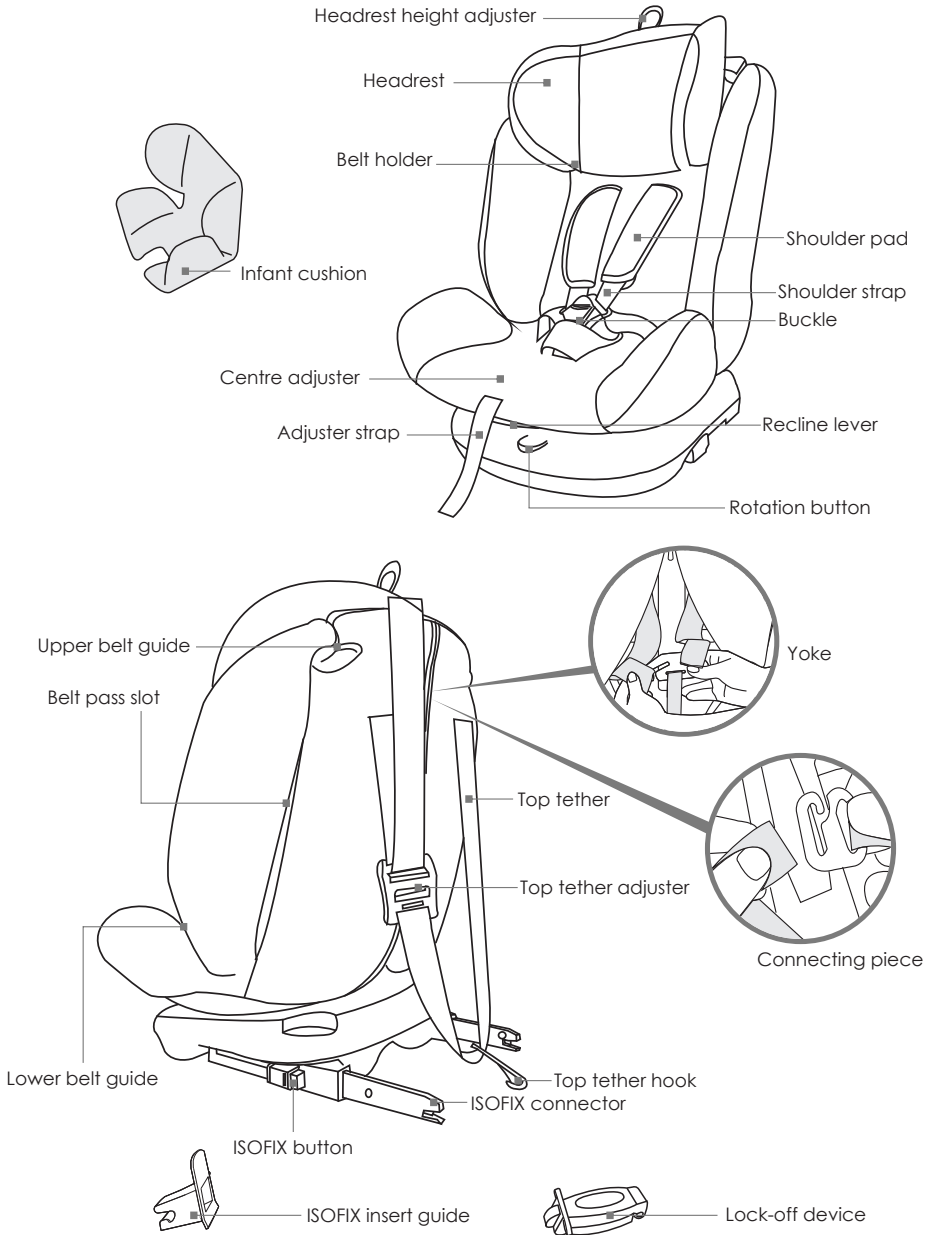
B Lap belt



WARNING!

Refer to the vehicle's instruction manual to install the seat in the front seat.

5. Parts List

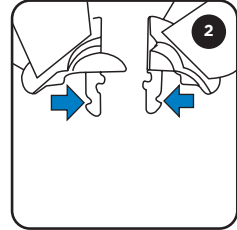
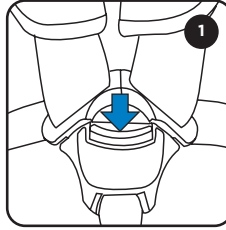


6. Adjusting the Car Seat

6.1. ADJUSTING BUCKLE

Open buckle:

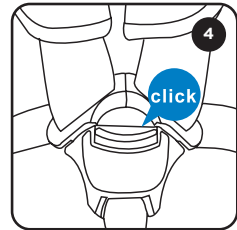
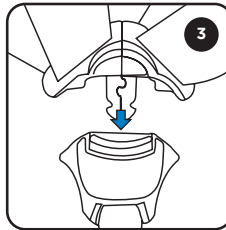
Press red button until buckle latches are released from the buckle (fig. 1)



Lock buckle:

Guide the two buckle latches together (fig. 2), putting them into the harness buckle house (fig. 3). A “click” will signal when locked.

Note. The buckle will not lock with one latch only.

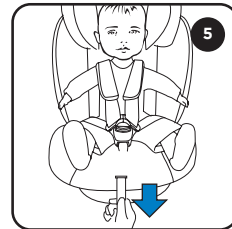


6.2. ADJUSTING HARNESS

Tighten harness:

Pull the adjuster strap until the harness lies flat and close against your child's body (fig. 5).

Note. The harness should allow 1 finger width, approx. 1 cm at the top of the shoulders for ideal fit.

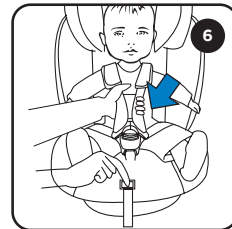


WARNING!

Do not add additional items such as blankets or padded clothing.

Bulky items can lead to incorrect harness tightening.

In an accident the child can slip out of the restraint if not properly tightened.



Loosen harness:

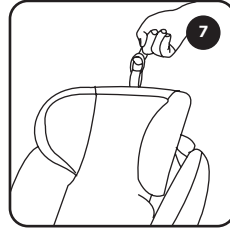
Press the centre adjuster and at the same time pull both shoulder belts forwards (fig. 6)

DO NOT pull on the shoulder pads.

6. Adjusting the Car Seat

6.3. ADJUSTING HEADREST

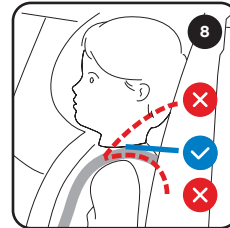
1. Loosen the harness to allow full movement of the headrest
2. Pull the headrest height adjuster, lifting the headrest up/down to the desired position (fig. 7).



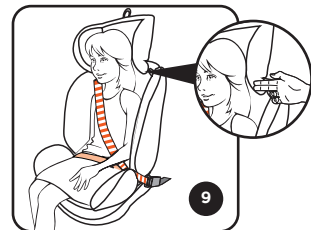
IMPORTANT

A correctly adjusted headrest ensures optimal protection for your child in the safety seat.

When installed by 5-point harness, the headrest must be adjusted so that the shoulder belts are at the same level as your child's shoulders (fig. 8).



When installed by 3-point vehicle belt, the headrest must be adjusted so that there is a space two fingers wide between the headrest and your child's shoulders. Make sure the diagonal seat belt section is on your child's shoulder but not on the neck (fig. 9)

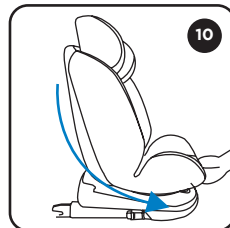


6.4. ADJUSTING RECLINE POSITIONS

Pull the recline lever and at the same time incline seat to desired position (fig. 10).

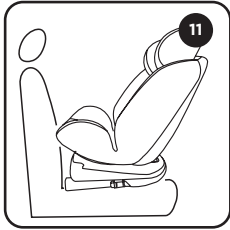
CAUTION

Adjust to most reclined position when installed rearward facing.



6. Adjusting the Car Seat

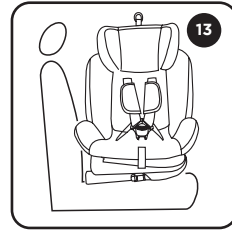
6.5. ROTATING SEAT



Rearward facing
Only for Group 0+



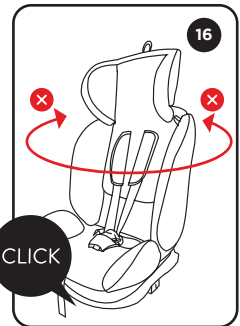
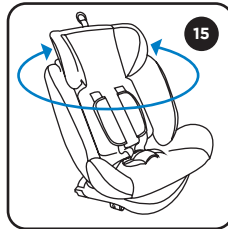
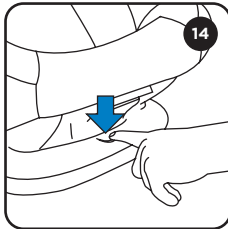
Forward facing
For Group 1/2/3



Lateral facing
For child sit convenience

1. Press down rotation button and rotate seat to intended direction (fig. 14, 15).
2. When seats rotates to desired direction, rotation handle will “click” into place. Gently try to rotate the seat to make sure the seat is locked into position (fig. 16).

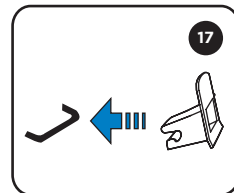
 **WARNING!**
Only for use when putting child in or out of the seat.



6.6. ADJUSTING ISOFIX

If your vehicle is not equipped with the ISOFIX insert guides as standard, clip the two insert guides which are included with the seat, with the cut-out facing upwards onto the two ISOFIX attachment points of your vehicle.

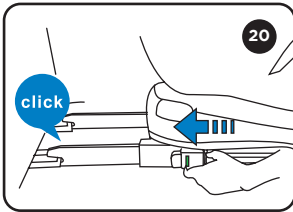
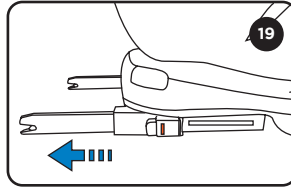
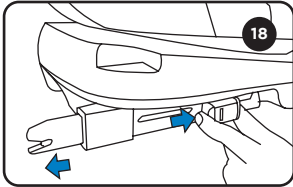
Tip: The ISOFIX attachment points are located between the surface and the backrest of the vehicle seat.



6. Adjusting the Car Seat

6.6.1. ISOFIX INSTALLATION

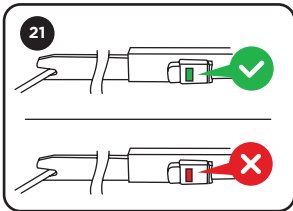
1. On each side of the seat, squeeze the ISOFIX button and fully extend the ISOFIX connectors (fig. 18, 19).



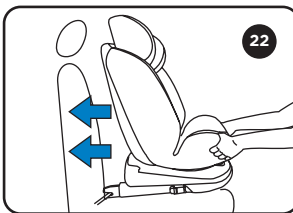
2. Slide the two ISOFIX connectors firmly into the insert guides until the ISOFIX connectors engage with a “click” noise on both sides. The ISOFIX button must turn green on both sides (fig. 20).

CAUTION!

The ISOFIX connectors are only correctly engaged if both of the ISOFIX buttons are green (fig. 21).



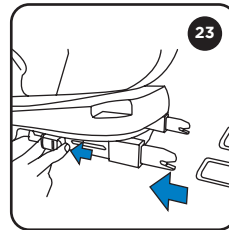
3. Push the child seat towards the backrest applying firm, even pressure on both sides. Make sure it is safely attached and recheck the green safety buttons to make sure that both are completely green (fig. 22).



6. Adjusting the Car Seat

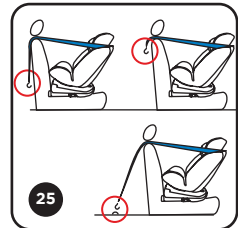
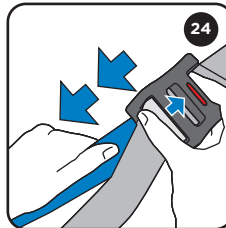
6.6.2. REMOVE ISOFIX

Squeeze the ISOFIX button and pull back the ISOFIX connectors (fig. 23).




6.7. ADJUSTING TOP TETHER

1. Take the top tether and, if required, lengthen the belt by pressing the top tether brake button to release the strap, pulling to adjust as necessary (fig. 24).



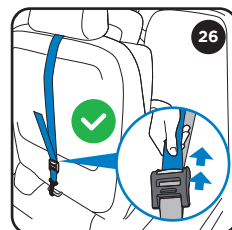
2. Attach the top tether hook to the top tether anchorage point which is recommended in the owner's manual of your car (fig. 25).

 **Look for this symbol in your car**



 **CAUTION!**
Do not spin in forward facing mode with the top tether attached

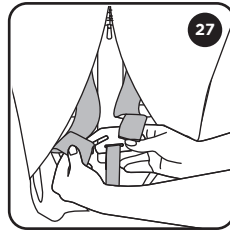
3. To tension the top tether, remove any slack by pulling on the free end of the strap until it is suitably tightened. The top tether will be properly tightened when the tension indicator turns completely green (fig. 26).



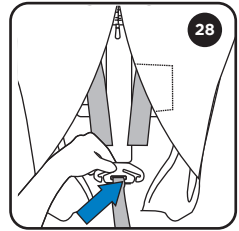
6. Adjusting the Car Seat

6.8. REMOVE AND INSTALL HARNESS

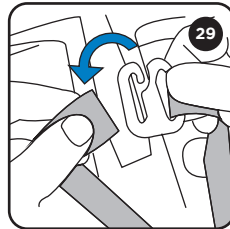
1. Unhook the shoulder belts from the yoke on the back side of the child seat (fig. 27).



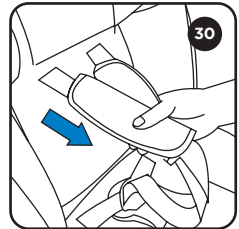
2. Store the yoke at the rear of the seat in the fabric pouch (fig. 28).



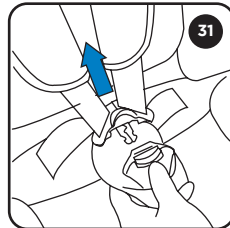
3. Unhook the shoulder pad straps from the connecting piece (fig. 29).



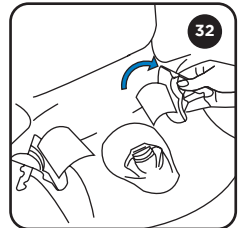
4. Pull out both the shoulder pads and the two shoulder belts from the slots (fig. 30).



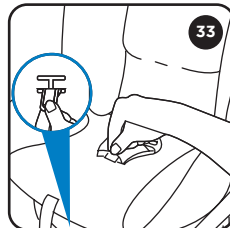
5. Open the buckle (fig. 31).



6. Roll the shoulder belts together and store them in the fabric pouch at the rear of the seat (fig. 32).



7. Grasp the metal plate from underneath and turn it into a vertical position. Push upwards and slide the metal plate through the slot (fig. 33).



8. To re-fit the harness:
Simply follow the steps in the opposite order. Make sure the belt is not twisted.

7. Installation

7.1. GROUP 0+ REARWARD FACING (0-13 kg, from birth to approx. 18 months)

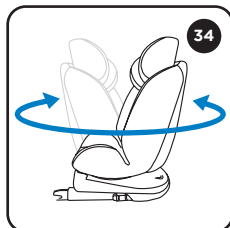


WARNING!

Never use in front passenger seats equipped with active airbag. DEATH OR SERIOUS INJURY can occur.

1. Rotate seat to a rearward facing position (see section 6.5). Adjust seat to most reclined position (see section 6.4).
2. Place seat in the direction facing opposite of travel (fig. 34, 35, 36).

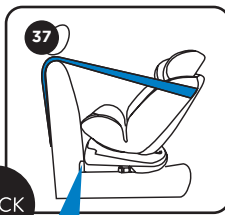
Note. Use the infant cushion until the baby reaches 9 kg. When the baby is 9-36 kg, remove the infant cushion.



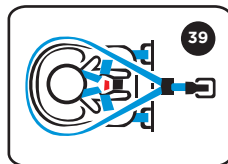
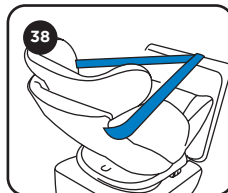
7.1.1. INSTALLATION USING ISOFIX CONNECTORS AND TOP TETHER

(If your car is not equipped with ISOFIX anchorage, please see section 7.1.2. Install using 3-point belt).

1. Install ISOFIX connectors (see section 6.6) (fig. 17).
2. Insert the top tether into both belt guides and attach top tether hook to anchorage point (see section 6.7) (fig. 38).
3. Sit your child in the child seat. Adjust headrest (see section 6.3), adjust harness and lock buckle (see section 6.1), and tighten harness as required (see section 6.2) (fig. 39).



CLICK



7. Installation

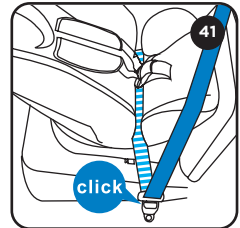
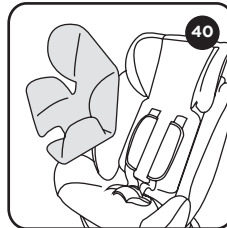
7.1.1. INSTALLATION USING ISOFIX CONNECTORS AND TOP TETHER

FOR THE SAFETY OF YOUR CHILD, BEFORE EVERY JOURNEY IN THE CAR CHECK:

- the child safety seat is engaged on both sides with the ISOFIX connectors in the ISOFIX attachment points and that both buttons are green.
- the child seat is firmly installed in the vehicle.
- the top tether is tightly tensioned over the backrest of the car seat and the tension indicator is green.
- the straps of the child safety seat are close to the body without constricting the child.
- the shoulder belts are correctly adjusted and the straps are not twisted.
- the shoulder pads are at the same level as your child's shoulders.
- the buckle latches are engaged in the harness buckle.

7.1.2. INSTALLATION USING 3-POINT VEHICLE SEAT BELT

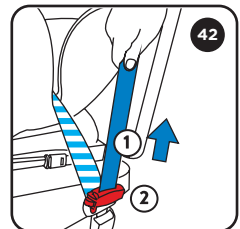
1. Open buckle and remove infant cushion (fig. 40).
2. Guide vehicle lap belt through both lower belt guides, engage the buckle tongue in the vehicle seat belt buckle (fig. 41).
Replace the infant cushion.



CAUTION!

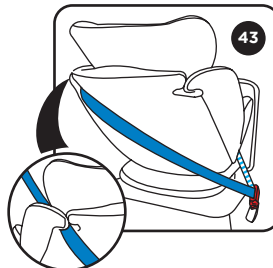
The vehicle seat belt buckle must not be positioned in the lower belt guide.

3. Pull the diagonal belt firmly to tighten (hold tension) and clamp the lock-off device on diagonal belt as close to vehicle seat belt buckle as possible (fig. 42).
4. Around back of seat then through upper belt guide which in the same side of vehicle seat belt retractor (fig. 43).



CAUTION!

Make sure belt is not twisted and buckle is engaged.

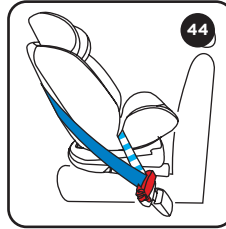


7. Installation

7.1.2. INSTALLATION USING 3-POINT VEHICLE SEAT BELT

5. Shake the child safety seat to make sure it is firmly installed in the vehicle (fig. 44).

6. Place the infant cushion on the seat. Sit your child in the child seat. Adjust headrest in (see section 6.3), adjust harness and lock buckle (see section 6.1), and tighten harness as required (see section 6.2) (fig. 45).



FOR THE SAFETY OF YOUR CHILD, BEFORE EVERY JOURNEY IN THE CAR CHECK:

- the child seat is firmly installed in the vehicle.
- the straps of the child safety seat are close to the body without constricting the child.
- the shoulder belts are correctly adjusted and the straps are not twisted.
- the shoulder pads are at the same level as your child's shoulders.
- the buckle latches are engaged in the harness buckle.

7.2. GROUP 1 FORWARD FACING USING ISOFIX AND 3-POINT SEAT BELT (9-18 kg, approx. 9 months to 4 years)

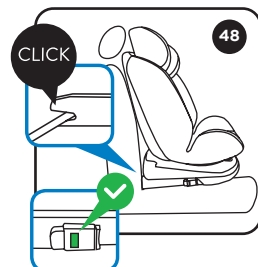
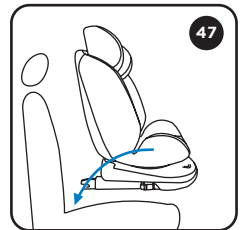
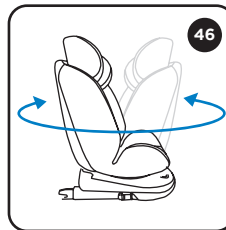


IMPORTANT!

DO NOT use forward facing before the child's weight exceeds 9 kg.

WARNING! Once the car seat is installed, if another recline position is selected, you should repeat the car seat installation steps described below to ensure a proper installation in this new position.

1. Rotate seat to forward facing (see section 6.5). Place seat in the direction facing to the travel (fig. 46, 47).
2. Install ISOFIX connectors (see section 4.6) (fig. 48). (If your car is not equipped with ISOFIX anchorage, please see section 7.1.2. Install using 3-point belt only).

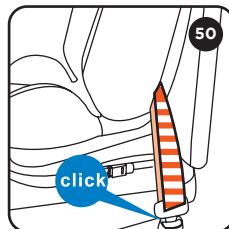
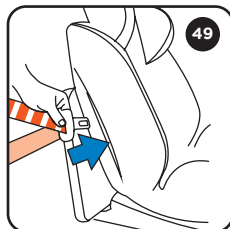


7. Installation

7.2. GROUP 1 FORWARD FACING USING ISOFIX AND 3-POINT SAFETY BELT (9-18 kg, approx. 9 months to 4 years)

3. Pull the vehicle belt out and guide it through the belt pass slot of the child seat (fig. 49). Make sure that the belt is not twisted.

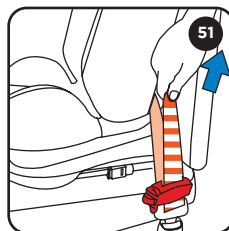
4. Engage the buckle tongue in the vehicle seat buckle (this should make a "click" noise (fig. 50).



CAUTION!

The vehicle seat belt buckle must not be positioned in the belt pass slot.

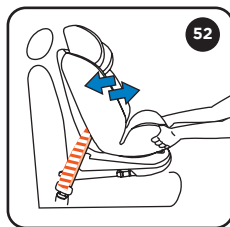
5. Pull the diagonal belt firmly to tighten (hold tension) and clamp the lock-off device on diagonal belt as close to the vehicle seat belt buckle as possible (fig. 51).



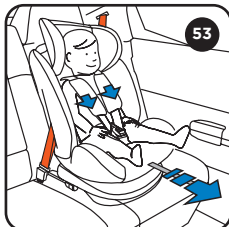
CAUTION!

Make sure the belt is not twisted and buckle is engaged.

6. Shake the child safety seat to make sure it is firmly installed in the vehicle (fig. 52).



7. Have your child sit down in the child seat. Adjust the headrest to required height (see section 6.3), adjust the harness and lock buckle (see section 6.1), and tighten harness (see section 6.2) (fig. 53).



WARNING! For Group I, this seat can also be installed with the vehicle seat belt only. This fitting has been tested and homologated. If you wish to only use the vehicle seat belt installation, skip past the ISOFIX connector content.

FOR THE SAFETY OF YOUR CHILD, BEFORE EVERY JOURNEY IN THE CAR CHECK:

- the child safety seat is engaged on both sides with the ISOFIX connectors in the ISOFIX attachment points and that both buttons are green.
- the child seat is firmly installed in the vehicle.
- the straps of the child safety seat are close to the body without constricting the child.
- the shoulder belts are correctly adjusted and the straps are not twisted.
- the shoulder pads are at the same level as your child's shoulders.
- the buckle latches are engaged in the harness buckle.

7. Installation

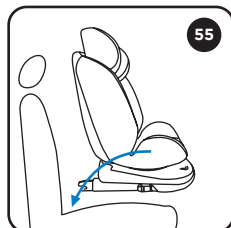
7.3. GROUP 2 AND 3 FORWARD FACING ISOFIX WITH 3-POINT SEAT BELT (15-36 kg, from 3 years to 12 years)

1. Remove the harness when using for Group 2/3 (see section 6.8).

2. Rotate seat to forward facing (see section 6.5). Place seat in the direction of travel (fig. 54, 55).

3. Install ISOFIX connectors (see section 6.6) (fig. 56).
(If your car is not equipped with ISOFIX anchorage, please see section 7.1.2. Install using 3-point belt only).

4. Sit your child in the child seat. Adjust headrest to required height (see section 6.3). Pull out the vehicle seat belt and guide it in front of your child to the vehicle seat buckle. Engage the buckle tongue into the vehicle seat buckle (fig. 57).



CAUTION!

The vehicle seat belt must not be positioned in the lower belt guide.

5. Place the diagonal seat belt section and lap belt section on the side of the vehicle seat belt buckle in the lower belt guide (fig. 58).

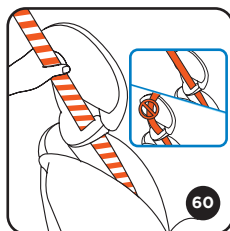
6. Place the lap belt section on the other side of the child seat in the lower belt guide (fig. 59).



CAUTION!

The lap belt section must lie as low as possible over the child's hips on both sides.

7. Guide the diagonal seat belt section into the belt and ensure it is not twisted (fig. 60).



WARNING! For Group 2 and 3, this seat can also be installed with the vehicle seat belt only. This fitting has been tested and approved.

If you wish to only use the vehicle seat belt installation, skip past the ISOFIX connector content.

7. Installation

7.3. GROUP 2 AND 3 FORWARD FACING (15-36 kg, from 3 years to 12 years)

FOR THE SAFETY OF YOUR CHILD, BEFORE EVERY JOURNEY IN THE CAR CHECK:

- the child safety seat is engaged on both sides with the ISOFIX connectors in the ISOFIX attachment points and that both buttons are green.
- the child seat is firmly installed in the vehicle.
- the lap belt section runs through the lower belt guides on both sides.
- the diagonal seat belt section on the side of the vehicle seat belt buckle also runs through the lower belt guide.
- the diagonal seat belt section runs through the belt holder of the headrest.
- the buckle is engaged and the seat belt is not twisted.

8. Care and Maintenance

8.1. CARE FOR THE HARNESS BUCKLE

It is vital for the safety of the child that the harness buckle works correctly. Malfunctions of the harness buckle are usually caused by accumulations of dirt or foreign bodies.

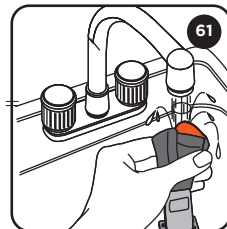
Malfunctions are as follows:

- The buckle latches are ejected before the red release button is pressed.
- The buckle latches will no longer lock home (i.e. they are ejected again if you try lock them in.)
- The buckle latches engage without an audible “click”.
- The buckle latches are difficult to insert (you feel resistance).
- The buckle only opens if extreme force is applied.

Solution:

Clean out the harness buckle so that it functions properly once again.

1. Follow section 6.8 to remove the harness buckle.
2. Soak the harness buckle in warm water with washing-up liquid for at least an hour. Then rinse and dry it thoroughly (fig. 61).



8. Care and Maintenance

8.2. CLEANING THE FABRIC COVER

The cover can be removed and cleaned according to the instructions provided on the care label.

First remove the harness (see section 6.8), then take off the fabric cover (fig. 62, 63). When re-fitting, simply follow the steps in reverse.

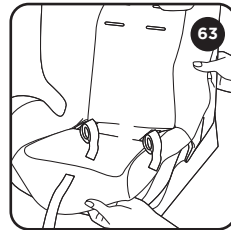
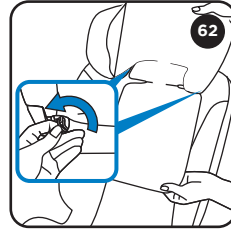
When washing belts and plastic parts, use neutral detergent and warm water.

Ensure that soap does not enter inside the buckle or metal pieces.

Do not use chemical products or bleach on any part of the child seat.


Clean the harness release mechanism by removing any dirt or debris build up with a soft bristled brush.

Apply a lubricant to ensure that the spring and all mechanism functions.





If you have any questions or concerns regarding this product,
do not hesitate to contact our expert team online
via online4baby.com/contact-us

Feeling social?  
online4baby.com

Imported by Online4baby Ltd,
Meadowbank, Tweedale Way, Oldham, OL9 8EH, UK