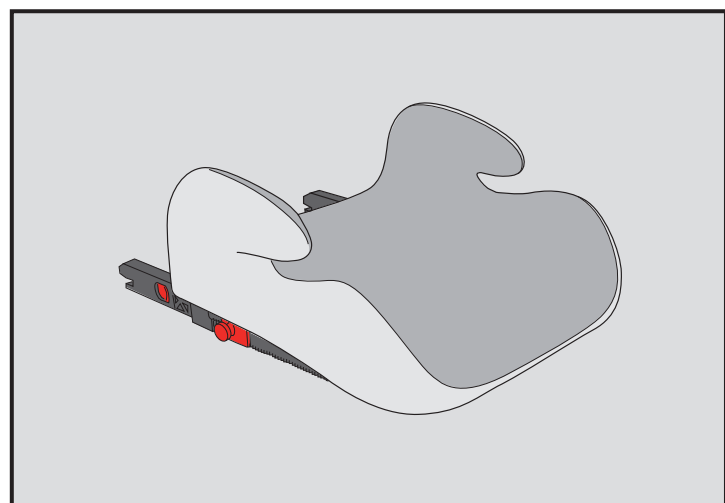


puggle™

Feeling social? online4baby.com
Type H9

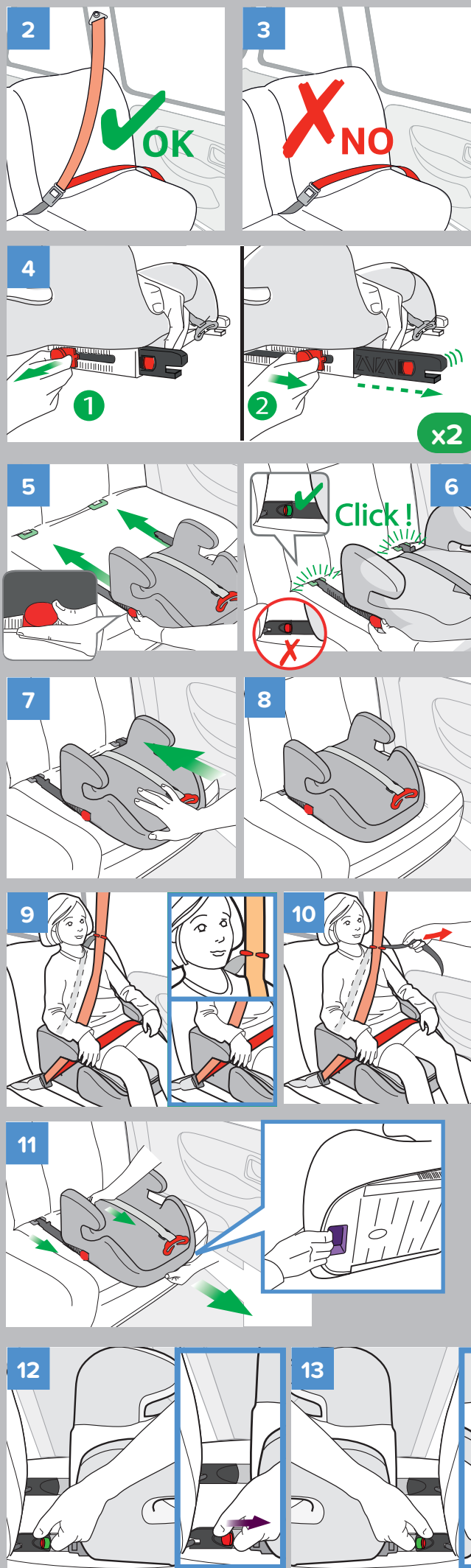
On The Move Luxe Easyfix

Group 3 Booster Seat
From 22 to 36 kg

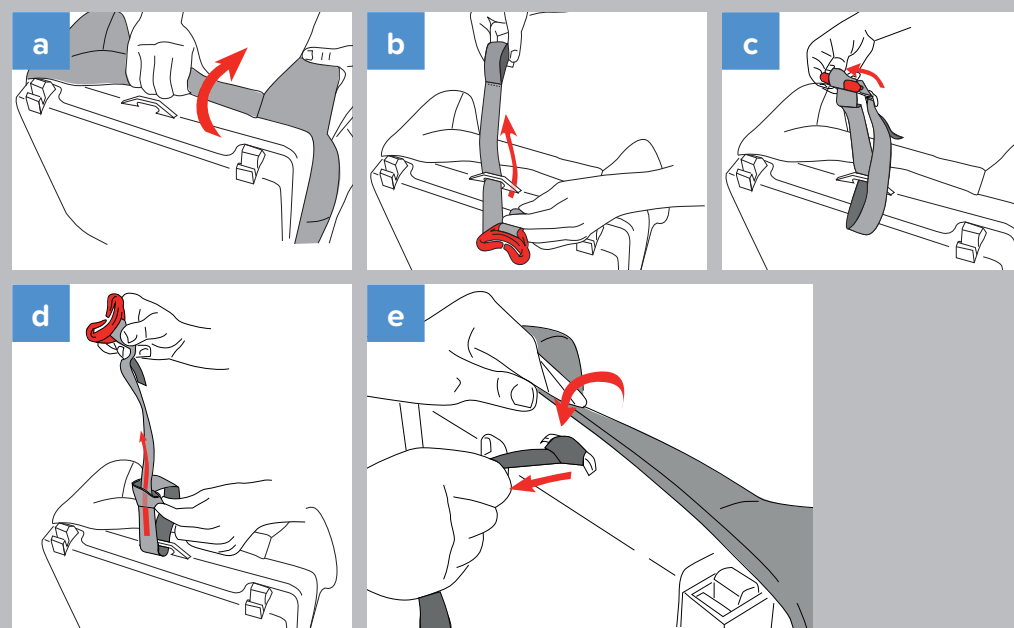


IMPORTANT - RETAIN FOR FUTURE REFERENCE, READ CAREFULLY.

Warning: A child's safety is your responsibility.
This product is tested and approved to ECE R 44/04



Height adjustment device for the belt - Installation



Thank you for purchasing this **Group 3 booster seat**. If you require assistance with this product or if you wish to change an accessory, please contact our customer service department at online4baby.com/contact-us

SAFETY INSTRUCTIONS

WARNING: Please read these instructions carefully before using the seat and keep this guide in a safe place for future reference. If you do not comply with these instructions, the safety of your child could be compromised. Only install your group 3 booster seat on a forward facing seat that has a 3-point seat belt.

- The hard items and the items in plastic of the child restraint system must be located and installed so that when used normally, they do not get trapped under a movable seat or in the vehicle door.
- Make sure the straps to attach the restraint system to the vehicle are kept tight and adjust the straps that hold in the child. The straps must not be twisted.
- Make sure the sub-abdominal straps are run as low as possible, to keep the pelvis in good position.
- Replace the restraint system if it has been subjected to violent shocks in an accident.
- It is dangerous to change or add elements to the restraint system in any way without the authorisation of the competent authority, or not to carefully follow the instructions on installation provided by the manufacturer of the child restraint system.
- Keep the seat out of direct sunlight so that the child does not get burned.
- Do not leave the child unattended in a child restraint system.
- Make sure that luggage and other items that might harm the child in the seat in the event of a shock are correctly stowed away.
- Do not use the child restraint system without the cover.
- Do not replace the seat cover with one that has not been recommended by the manufacturer, because it plays a direct role ensuring that the restraint system works effectively.
- If you have a doubt concerning the installation and correct usage of your seat, please contact the manufacturer of the child restraint system.
- Install your child restraint system on seats categorised as "Universal" in your car manual.
- Do not use weight-bearing contact points other than those described in the instructions and indicated on the restraint system.
- Always use the back seat if possible even if the Highway Code stipulates that using the front seat is allowed.
- Always ensure that the seat belt has been fastened.
- Do not clothe the child in garments that are too bulky in winter.

Your Group 3 car seat [1]

This is a **Group 3 car seat** that is designed for children weighing between 22 and 36 kg.

- A. Height adjustment device for the belt
- B. Shell + cover
- C. EASYFIX adjustment handle (x2)
- D. EASYFIX connector (x2)

Installing the car seat

Group 3, 22 to 36kg

Installing the car seat and placing the child in the vehicle

IMPORTANT: This car seat must only be installed with a 3-point safety belt [2]. Never install the car seat within 2-point safety belt [3]. Never use a different installation method than the one described here!

Fold the adjustment strap over the seat cover to prevent it from getting caught during installation. Position the car seat on the rear seat of the vehicle [8]. Sit your child in the car seat. Pull and fasten the vehicle seat belt. The lap section of the belt should be routed below the armrests. The diagonal section passes over the child's shoulder and underneath the armrest. Pass the adjustment strap behind the child's shoulder and attach the red clip to the diagonal part of the seat belt [9]. Adjust the strap to guide the diagonal belt over the shoulder and away from the neck area [10]. Tighten the vehicle seat belt. **Ensure that the belt is properly tightened, that it is not twisted and that it is not at the level of your child's neck.**

Seat installation with Easyfix connectors

If your vehicle is equipped with ISOFIX anchorage points, you can use the Easyfix seat connectors in combination with the vehicle belt.

IMPORTANT: This car seat must only be installed with a 3-point safety belt [2]. Never install the car seat within 2-point safety belt [3]. Never use a different installation method than the one described here!

Fold the adjustment strap over the seat cover to prevent it from getting caught during installation. Pull on the red handles and at the same time extend the EASYFIX connectors from the car seat as far as possible [4]. Position the car seat on the rear seat of the vehicle. Bring the EASYFIX connectors in line with the seat's ISOFIX anchor points [5]. Click the EASYFIX connectors into the anchor points; holding the seat by the two easyfix adjustment handles, the indicators on each connector should turn from red to green [6]. Push the car seat by exerting equal pressure on both sides until the rear of the car seat is pressed firmly against the vehicle seat [7] [8].

Sit your child in the car seat. Pull and fasten the vehicle seat belt. The lap section of the belt should be routed below the armrests. The diagonal section passes over the child's shoulder and underneath the armrest. Pass the adjustment strap behind the child's shoulder and attach the red clip to the diagonal part of the seat belt [9]. Adjust the strap to guide the diagonal belt over the shoulder and away from the neck area [10]. Tighten the vehicle seat belt.

Ensure that the belt is properly tightened, that it is not twisted and that it is not at the level of your child's neck.

Removing the car seat (Easyfix connectors)

Pull the car seat forward using the handle under the seat [11]. On either side of the seat, release the EASYFIX connectors from their anchor points by pulling the release buttons towards you. The indicators will turn from green to red [12] [13]. The car seat can now be removed.

Storing the instruction manual

Store this instruction manual by slipping it into between the shell and the cover of the seat [1].

Cleaning

All the fabric parts are removable. Minor stains can be removed using a sponge and soapy water or hand-washed at 30°C in soapy water. Do not use bleach, do not iron, do not machine wash or tumble dry.

WARNING

- This car seat is a "Universal" child restraint system. It has been approved in accordance with regulation N°44/04, and is suitable for general use in vehicles and is compatible with the majority (some exceptions) of vehicle seats.
- It is more likely that the seat is perfectly compatible if the vehicle manufacturer states that its vehicles are suitable for taking "Universal" child restraint systems.
- This restraint system is classified as "Universal" in accordance with the strictest approval criteria, whereas earlier models do not correspond to these new provisions.
- It can only be adapted to vehicles with 3-point safety belts that are either fixed or have a roller mechanism and that have been approved compliant with the UN/ECE N° 16 or other equivalent standards.

If in doubt, contact the manufacturer or retailer of the restraint system.

If you have any questions or concerns regarding this product, do not hesitate to contact our expert team online via online4baby.com/contact-us

Feeling social? online4baby.com

Imported by Online4baby Ltd.
Meadowbank, Tweedale Way, Oldham, OL9 8EH, UK