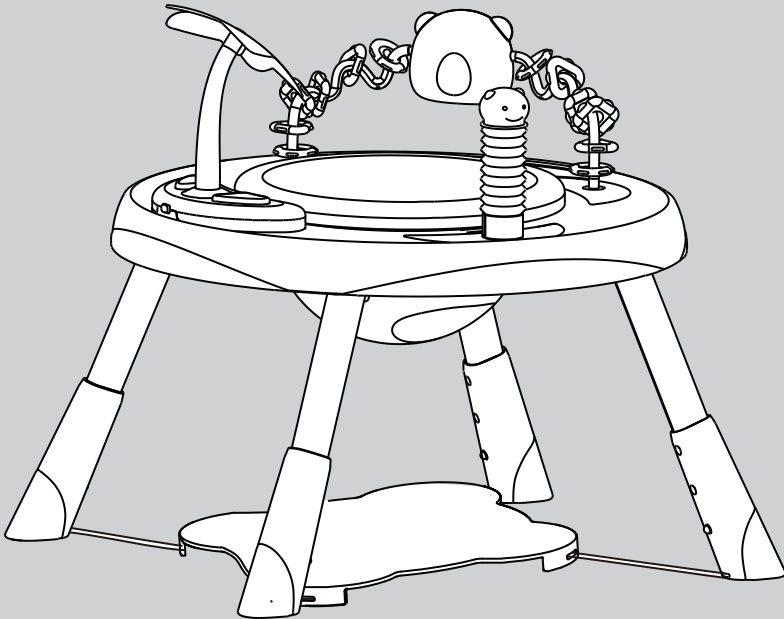


4-in-1 Musical Toy Activity Entertainer

Instruction manual



**IMPORTANT! READ CAREFULLY
AND KEEP FOR FUTURE REFERENCE.**

Warning: The child's safety is your responsibility.

This product is tested and approved to
EN 71-1: 2014+A1: 2018

1 .Welcome

Thank you for purchasing the Puggle 4-in-1 Musical Toy Activity Entertainer.

Please read the instructions and warnings carefully before use to ensure safe and satisfactory operation of your Puggle 4-in-1 Musical Toy Activity Entertainer.

If you have a query with this product or require replacement parts, please contact Online4baby online at online4baby.com/contact-us.

2. Safety instructions

IMPORTANT! READ CAREFULLY AND KEEP FOR FUTURE REFERENCE.

- **WARNING!** Read these instructions carefully before assembly and use and keep for future reference. The child may be hurt if you do not follow these instructions.
- **WARNING!** The child's safety is your responsibility.
- **WARNING!** Before using, remove and dispose of any plastic bags and other packaging (e.g. fasteners, fixing ties, etc.) and keep them out of reach of children.
- **WARNING!** This product is suitable for one child who is able to sit unaided, approximately from 6 months of age. It is not intended for children weighing more than 12kg.
- **WARNING!** Never leave the child unattended.



- **WARNING!** This product must be assembled by an adult.
- **WARNING!** Ensure the child is correctly and safely positioned in the seat.
- **WARNING!** The child should only use the product for a maximum of 20 minutes at a time.
- **WARNING!** Keep children away from this product during assembly.
- **WARNING!** Do not allow a baby to fall asleep in this product.
- **WARNING!** Never move or lift this product with the child in it.
- **WARNING!** Do not use the activity centre if it is damaged or broken.
- **WARNING!** Always keep child in view while in the activity centre.
- **WARNING!** Use only on flat surfaces free of objects that could cause the activity centre to tip over.
- **WARNING!** To avoid burns, keep the child away from hot liquids, ranges, radiators, space heaters, fire places etc.
- **WARNING!** Do not under any circumstances apply excessive pressure to the top tray.
- **WARNING!** Keep children away from this product during set up and when not in use.
- **WARNING! STAIR HAZARD:** Avoid serious injury or death. Never use activity centre near stairs. A child's movement can slide the activity centre.

2. Safety instructions

- This product contains small parts. Adult assembly required.
- Keep hot drinks, electrical cords and other possible sources of danger out of your child's reach.
- Strings can cause strangulation. DO NOT place items with a string around child's neck, such as hood strings or pacifier cords.
- Do not suspend strings over product or attach strings to toys. Do not add strings or straps to any part of the activity centre.
- Do not use any hardware or parts other than that supplied.
- FALL HAZARD: Do not place the activity center on an elevated surface.
- For indoor use only.
- Regularly check that all fittings remain tight. Tighten if required.
- Inspect the product before all assembly and periodically during use.
- Never use this product if there is any loose or missing fasteners, joints or broken parts.
- Any additional or replacement parts should only be obtained from the manufacturer or distributor. Never substitute parts.
- Do not under any circumstances apply excessive pressure to the top tray.
- Other children should not be allowed to play with the product whilst the child is in it as this can be dangerous.

This product conforms to EN 71-1:2014+A1:2018

3. Battery Safety

ATTENTION! BATTERY SAFETY: KEEP FOR FUTURE REFERENCE

Read these instructions carefully before use and keep for future reference. The child may be hurt if you do not follow these instructions. The electronic toy tray and the sliding foot panel require "3 x AAA 1.5 Volt alkaline type batteries (not included).

To fit and/or replace batteries: loosen the screw on the battery compartment cover with a small cross head screwdriver, remove the battery compartment cover. Remove the spent batteries and fit new ones, ensuring that they have been fitted in the correct polarity, as shown inside the battery compartment. Replace the battery cover and tighten the screw.

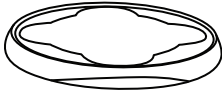
CAUTION! To prevent possible battery leakage, be sure to follow the guidelines outlined below:

- Batteries must only be installed by an adult.
- Alkaline batteries are recommended for longer battery life.
- Do not mix old and new batteries.
- Do not mix alkaline, standard (carbon zinc) or rechargeable batteries.
- Non-rechargeable batteries are not to be recharged.
- Rechargeable batteries are to be removed from the toy before being charged.
- Rechargeable batteries are only to be charged under adult supervision.
- Only batteries of the same or equivalent type as recommended are to be used.
- Batteries are to be inserted correctly by matching the + and - polarity markings.
- Exhausted batteries are to be removed from the toy.
- The supply terminals are not to be short-circuited.
- Dispose of exhausted batteries properly.
- Remove batteries when product is stored for long periods of time.
 - Use a suitable screwdriver to open the battery compartment door on toy.
 - Insert the battery as indicated inside the battery door and re-attach the battery compartment door with screw.

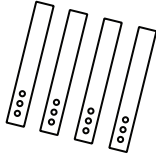


4. Parts List

A



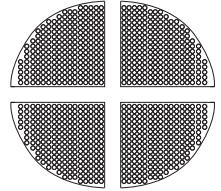
B



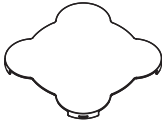
C



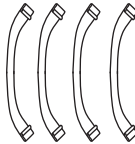
D



E



F



G



H



I



J



K



L

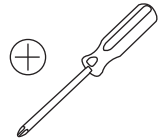


M



Contained in your carton are:

N ^o	Part	Qty
A	Top tray	1
B	Legs	4
C	Feet	4
D	Building block base	4
E	Base plate	1
F	Base plate straps	4
G	Seat unit	1
H	Caterpillar toy	1
I	Caterpillar toy plastic base	1
J	Bear toy	1
K	Bear toy plastic base	2
L	Tree toy	1
M	Music box	1



*cross head screwdriver not included

5. Assembly

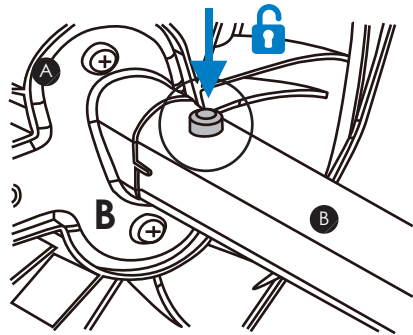
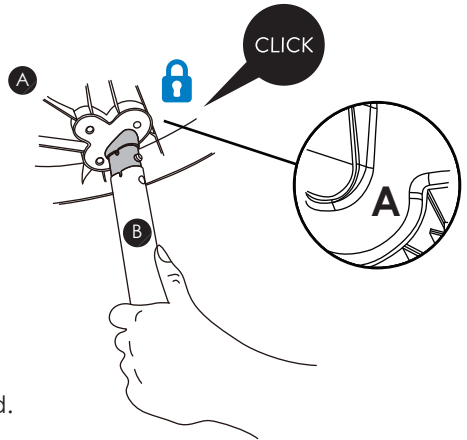
Check that all parts are present before starting assembly.

5.1. ASSEMBLE FRAME

Locate the top tray (A) and the 4 legs (B). Align the leg to the corresponding connectors as shown in the diagram. Each leg is marked with a letter which matches the letter on the corresponding connection point, e.g. leg 'A' connects with the connection point marked 'A', same for 'B', etc.

Push the leg into the connection point, you will hear a "click" as the pin pops out through the pin hole and the leg is secured. Repeat for each connector.

To release, push the pin in and pull off the leg.



5. Assembly

5.2. ASSEMBLE FEET

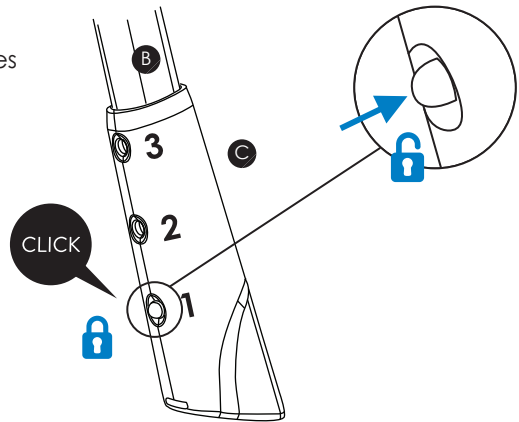
Insert the legs into the plastic feet by lining up the pin with the pin holes of the feet.

To adjust the height press the pin and set to the appropriate height.



WARNING!

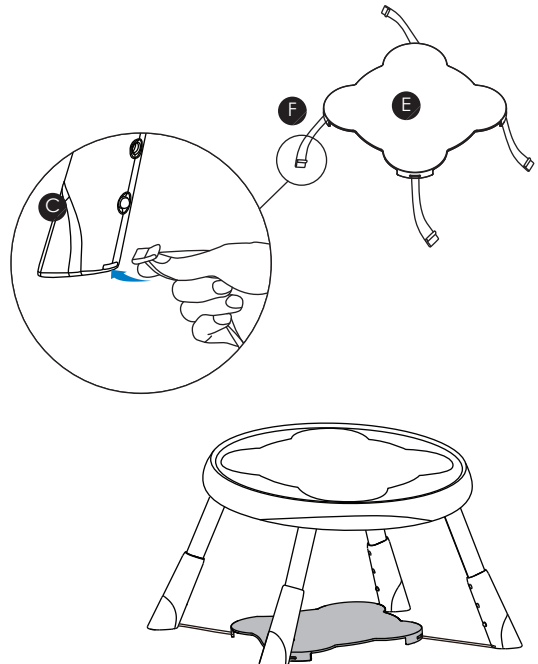
The four legs must be set to the same height before use.



5.3. ASSEMBLE BASE PLATE

Attach the base plate straps (F) to the base plate (E) and then connect the other end of each strap to the foot of each leg (C).

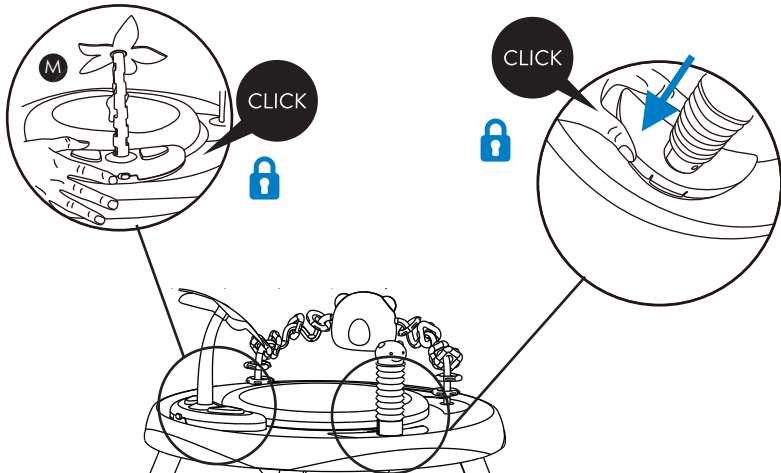
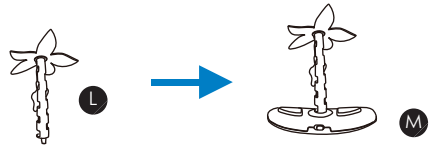
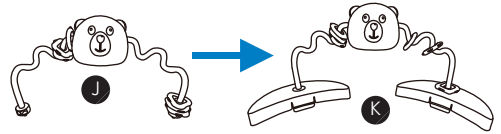
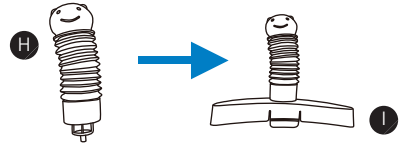
Pull the straps tight to secure.



5. Assembly

5.4. TOY ASSEMBLY

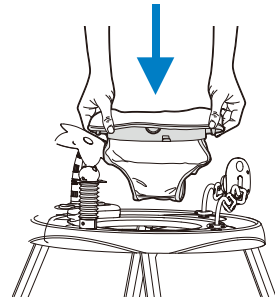
Insert the toy into its corresponding plastic base, i.e the caterpillar toy (H) into the caterpillar toy plastic base (I). Then connect the toy base to its corresponding housing on the top tray. You will hear a 'click' when locked in place.



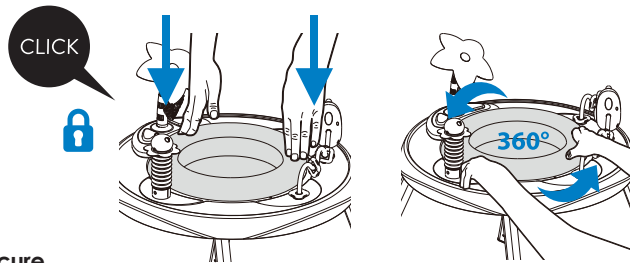
5. Assembly

5.5. SEAT ASSEMBLY

Insert the seat unit (G) into the centre of the entertainer.



Push down until you hear a 'click'. The seat unit is now connected to entertainer and the seat should be able to turn freely.



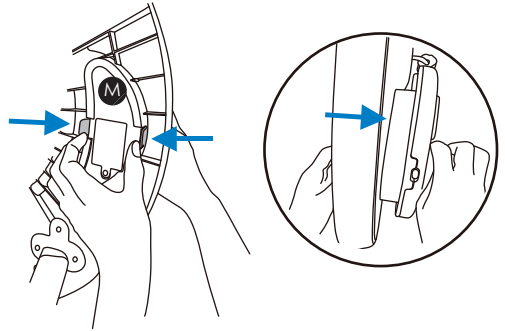
WARNING!

Check that the seat unit is secure prior to placing the child.

6. Music Box

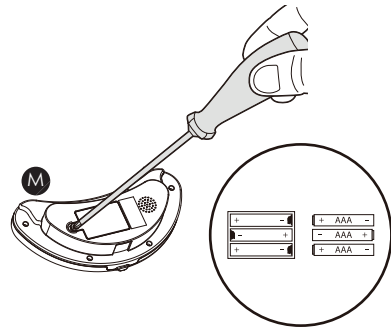
6.1. ADDING/REMOVING THE BATTERIES

On the underside of the top tray squeeze the connection tabs located on the either side of the bottom of the music box (M) to release it from the top tray and lift off.



To replace the batteries use a small cross head screwdriver to open the battery compartment door on the music box. Insert the batteries as indicated and replace the screw.

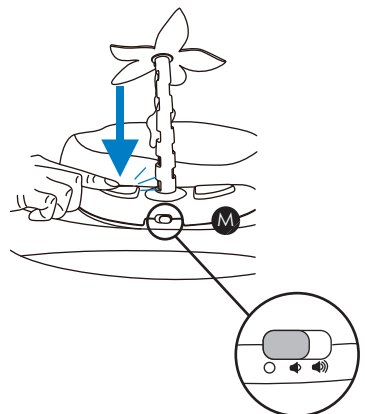
The electronic top tray requires three 1.5V "AAA" Alkaline batteries.



6.2. MUSIC BOX

There are two buttons on the music box (M), press these to play music and to change the tune.

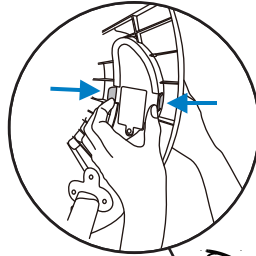
The power switch with volume adjustment is located at the front of the music box under the palm tree.



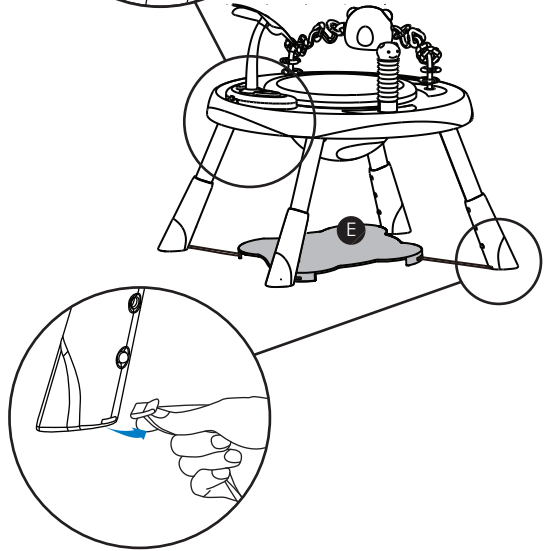
7. Convert to table

7.1. CONVERT TO TABLE MODE

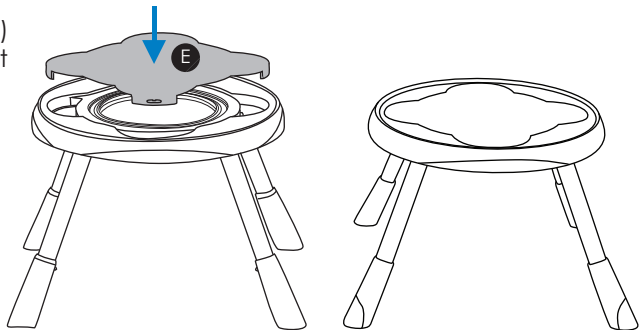
On the underside of the top tray detach each toy base by pressing the connection tabs to release the base and lift off from the top of the top tray.



Disconnect the base plate straps (F) from the feet and remove the base plate (E). Remove the straps from the base plate.



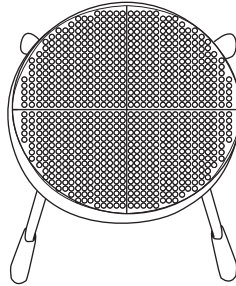
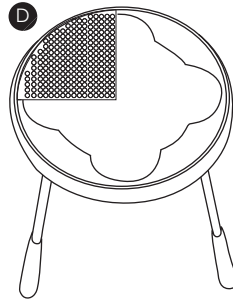
Attach the base plate (E) to the top tray to convert to table mode.



7. Convert to table

7.2. ADD BUILDING BLOCK BASE

Add the four building block bases (D) to the top of the table to change to building block mode.



8. Care and Maintenance

8.1. CLEANING AND MAINTENANCE



- Spot clean fabrics only using soft sponge with mild detergent. NEVER use bleach. Do not iron. Do not dry clean. Dry thoroughly before re-use or storage.
- Wipe the frame clean with a soft clean cloth and mild soap. NEVER use bleach.
- Clean the plastic parts with a damp cloth and dry immediately with a soft clean cloth.
- Never clean any part with abrasive, ammonia based, bleach based or spirit type cleaners.
- Ensure the product is fully dry before use or storage.
- Always ensure the entertainer is stored in a dry place to prevent mold or mildew developing. Store away from any heat sources and not in the sun. Prolonged exposure to direct sunlight may cause the fabric to fade.
- If the product is not intended to be used for any length of time, it is recommended to remove the batteries.

8.2. MAINTENANCE

- The correct use and maintenance of this entertainer is essential.
- This product requires regular maintenance to keep it in good working order.
- Regularly check all parts of the product to ensure that they are operating correctly and for signs of wear or damage.
- Do not use this product if any part is broken, torn or missing and use only spares provided by the manufacturer or distributor.



If you have any questions or concerns regarding this product,
do not hesitate to contact our expert team online
via online4baby.com/contact-us

Feeling social?  
online4baby.com

Imported by Online4baby Ltd,
Meadowbank, Tweedale Way, Oldham, OL9 8EH